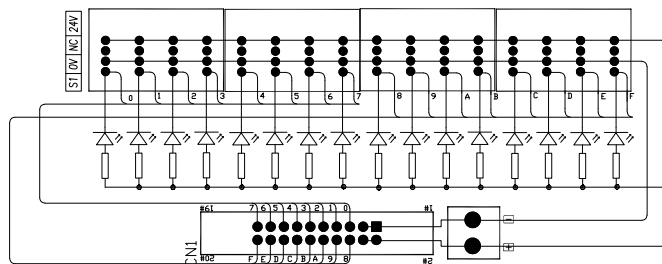


0241-C120K

Electronics & Interface > Signal Interface Modules



The web catalog is for reference only. Dinkle remains the right of product modification and engineering change of the design.
The final product is made according to engineering drawing.

Specification

Specification		
Number of connections		16 sets
Connection method		PID
Rated voltage		24 VDC
Rated current		1 A
Wire range		26~12 AWG
Stripping length		9~10 mm
Applicable ferrules		DN00510D DN00710D DN01510D
Input type		-
Connector		IDC 20-Pin, Mini-Clamp
Indicator		NO
L x W x H (mm)		65.2 x 77.9 x 43
Wire harness	Shielded	WHS33
	Unshielded	WHN33



Approvals

☒ **RoHS** ☒ **CE**