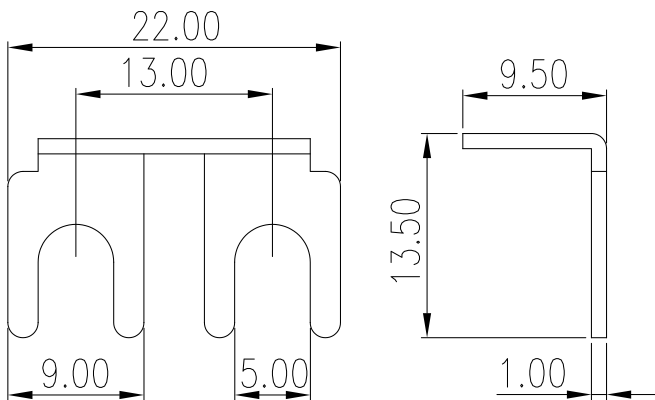


# DS-701R



Barrier Terminal Blocks > Accessories > Insertion Bridge



## Specification

|                     |                  |
|---------------------|------------------|
| Product description | Insertion Bridge |
| Rated Current       | 25A              |
| Pitch               | 13 mm            |
| Height              | 1.0mm            |
| Material            | Brass            |
| Surface Plating     | Tin Plated       |