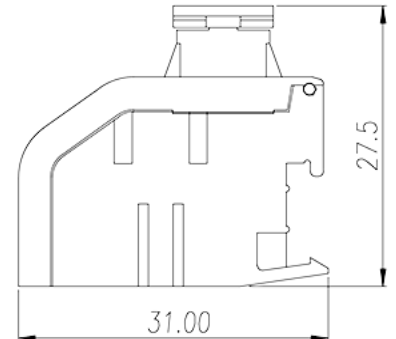
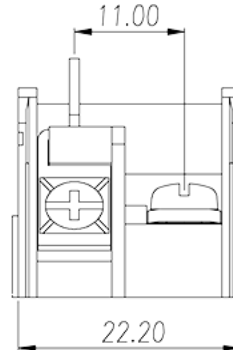
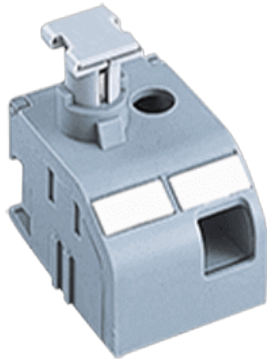


# TKE03

PCB Terminal Blocks &gt; Transformer Terminal Blocks

Date:2024-05-06Version:1.2



The web catalog is for reference only. Dinkle remains the right of product modification and engineering change of the design.  
The final product is made according to engineering drawing.

## Product Description

M3.5, 600V, 6.3A

## General information

Short description	Transformer terminal blocks, Screw connection
Color	Gray (default)
Connection method	Screw connection
Type of locking	Without

## Material information

Insulation material	PA
Insulation material group	I
Flame retardant rating , compliant with UL94	V0
Conductor material	COPPER ALLOY
Plating of conductor surface	Tin PLATED

## Connection data-IEC

Rated voltage (V)	800
Rated current (A)	6.3
Rated voltage (III/3)(V)	800

Rated impulse voltage (II/2)(KV)	5
Rated impulse voltage (III/2)(KV)	5
Rated impulse voltage (III/3)(KV)	5
Conductor cross section solid. min (mm <sup>2</sup> )	0.2
Conductor cross section solid.max (mm <sup>2</sup> )	10
Conductor cross section stranded. min (mm <sup>2</sup> )	0.2
Conductor cross section stranded. max (mm <sup>2</sup> )	10
Screw thread	M3.5
Slotted screwdriver size (Blade thickness x Width)(mm)	0.8x4.0
Philips screwdriver size	PH2
Rated torque (N.m)	1.17
Stripping Length (mm)	15~17

## Connection data-UL

Rated voltage (UL/CUL Group B)(V)	600
Rated current (UL/CUL Group B)(A)	6.3
Rated voltage (UL/CUL Group C)(V)	600
Rated current (UL/CUL Group C)(A)	6.3
Rated voltage (UL/CUL Group D)(V)	600
Rated current (UL/CUL Group D)(A)	5
Min. solid wire connection (AWG) acc. to UL/CUL	24
Max. solid wire connection AWG acc. to UL/CUL	12
Min. stranded wire connection AWG acc. to UL/CUL	24
Max. stranded wire connection AWG acc. to UL/CUL	12

## Environment & Safety

Back of the hand protection (YES or NO)	YES
Finger protection (YES or NO)	YES
Operating temperature. max (°C)	115
Operating temperature. min (°C)	-40

## UL Recognized

Wire Range (Group B)(AWG)	12~24
Rated voltage (Group B)(V)	600
Rated current (Group B)(A)	6.3

Wire Range (Group C)(AWG)	12~24
Rated voltage (Group C)(V)	600
Rated current (Group C)(A)	6.3
Wire Range (Group D)(AWG)	12~24
Rated voltage (Group D)(V)	600
Rated current (Group D)(A)	5

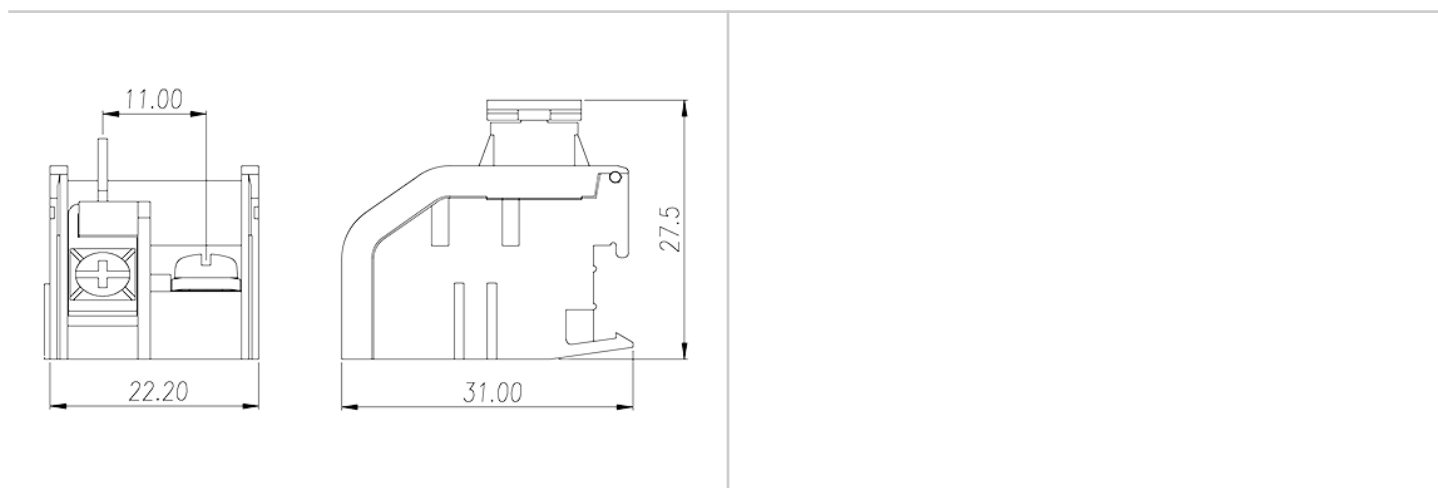
## CUL Recognized

Wire Range (Group B)(AWG)	12~24
Rated voltage (Group B)(V)	600
Rated current (Group B)(A)	6.3
Wire Range (Group C)(AWG)	12~24
Rated voltage (Group C)(V)	600
Rated current (Group C)(A)	6.3
Wire Range (Group D)(AWG)	12~24
Rated voltage (Group D)(V)	600
Rated current (Group D)(A)	5

## VDE Approval

Wire Range (mm <sup>2</sup> )	0.2~10
Rated voltage (V)	800
Rated current (A)	6.3

## Drawings



## Approvals

---

