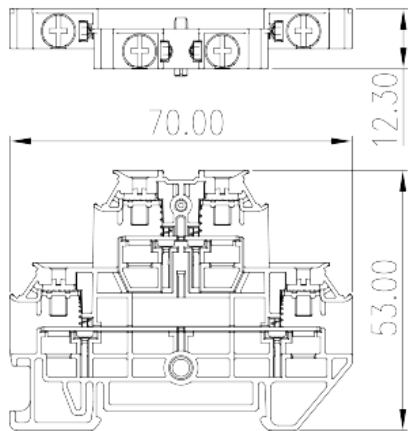
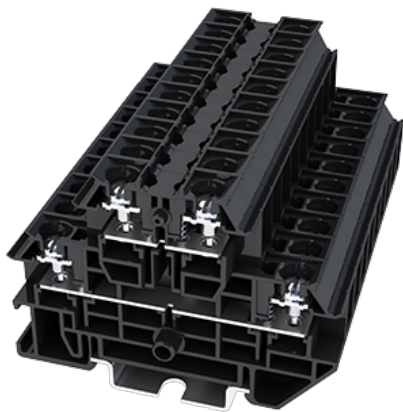


DKUU20

NEMA Terminal Blocks > Rail Mounting

Date:2024-05-17



The web catalog is for reference only. Dinkle remains the right of product modification and engineering change of the design.
The final product is made according to engineering drawing.

Product Description

M3.5, 600V, 20A

UL Recognized

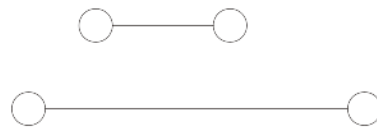
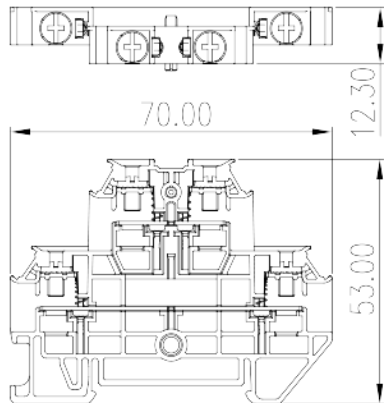
| | |
|----------------------------|-------|
| Wire Range (Group B)(AWG) | 26~12 |
| Rated voltage (Group B)(V) | 600 |
| Rated current (Group B)(A) | 20 |
| Wire Range (Group C)(AWG) | 26~12 |
| Rated voltage (Group C)(V) | 600 |
| Rated current (Group C)(A) | 20 |
| Wire Range (Group D)(AWG) | 26~12 |
| Rated voltage (Group D)(V) | 600 |
| Rated current (Group D)(A) | 20 |

CUL Recognized

| | |
|----------------------------|-------|
| Wire Range (Group B)(AWG) | 26-12 |
| Rated voltage (Group B)(V) | 600 |
| Rated current (Group B)(A) | 20 |
| Wire Range (Group C)(AWG) | 26-12 |
| Rated voltage (Group C)(V) | 600 |

| | |
|----------------------------|-------|
| Rated current (Group C)(A) | 20 |
| Wire Ranget (Group D)(AWG) | 26-12 |
| Rated voltage (Group D)(V) | 600 |
| Rated current (Group D)(A) | 20 |

Drawings



Approvals

