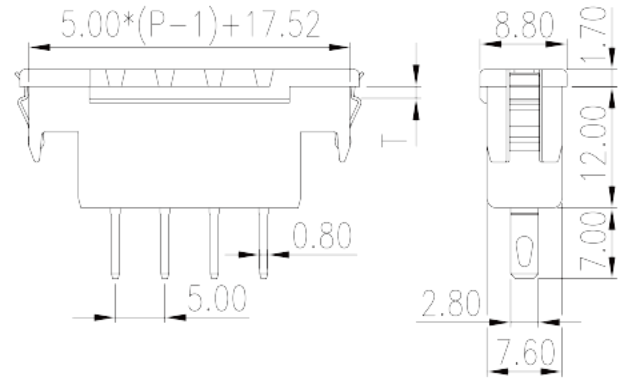
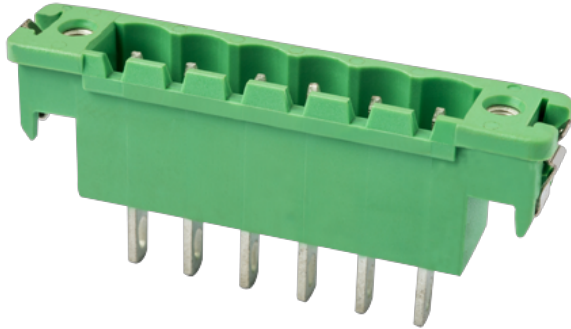


# 5EHDKM-XXP/T

PCB Terminal Blocks &gt; PCB Connector-Socket

Date:2024-05-05Version:V1



The web catalog is for reference only. Dinkle remains the right of product modification and engineering change of the design.  
The final product is made according to engineering drawing.

## Product Description

Pitch : 5.00 mm, 300V, 15A (T1.0 、 1.2 、 1.4 、 1.6 )

## General information

|  |  |
|--|--|
| Short description                      | PCB Connector – Socket, Wave soldering |
| Category                               | PCB Connector – Socket                 |
| Pitch (mm)                             | 5.00                                   |
| Color                                  | Green (default)                        |
| Type of locking                        | With lock flange                       |
| Soldering method                       | Iron Soldering                         |
| Length (mm)                            | $5.00 \times (P-1) + 19.34$            |
| Width (mm)                             | 8.8                                    |
| Height (mm)                            | 12                                     |
| Pin demensions (Thickness x Width)(mm) | 0.8x2.8                                |
| Number of positions                    | 02P~12P                                |
| Level                                  | Single level                           |

## Material information

|                           |    |
|---------------------------|----|
| Insulation material       | PA |
| Insulation material group | I  |

|  |                   |
|--|-------------------|
| Flame retardant rating , compliant with UL94 | V0                |
| Insulation resistance                        | □500MΩ at DC 500V |
| Conductor material                           | COPPER ALLOY      |
| Plating of conductor surface                 | Tin PLATED        |

## Connection data-IEC

|  |     |
|--|-----|
| Rated voltage (V)  | 630 |
| Rated current (A)  | 18  |
| Rated voltage (II/2)(V)                                  | 630 |
| Rated voltage (III/2) (V)                                | 320 |
| Rated voltage (III/3)(V)                                 | 320 |
| Rated impulse voltage (II/2)(KV)                         | 4   |
| Rated impulse voltage (III/2)(KV)                        | 4   |
| Rated impulse voltage (III/3)(KV)                        | 4   |
| Conductor cross section solid. min (mm <sup>2</sup> )    | 0.2 |
| Conductor cross section solid.max (mm <sup>2</sup> )     | 2.5 |
| Conductor cross section stranded. min (mm <sup>2</sup> ) | 0.2 |
| Conductor cross section stranded. max (mm <sup>2</sup> ) | 2.5 |
| Tightening torque with flange. max (N.m)                 | 0.3 |

## Connection data-UL

|  |     |
|--|-----|
| Rated voltage (UL/CUL Group B)(V)                | 300 |
| Rated current (UL/CUL Group B)(A)                | 15  |
| Rated voltage (UL/CUL Group D)(V)                | 300 |
| Rated current (UL/CUL Group D)(A)                | 10  |
| Min. solid wire connection (AWG) acc. to UL/CUL  | 24  |
| Max. solid wire connection AWG acc. to UL/CUL    | 12  |
| Min. stranded wire connection AWG acc. to UL/CUL | 24  |
| Max. stranded wire connection AWG acc. to UL/CUL | 12  |

## Environment & Safety

|                                 |     |
|---------------------------------|-----|
| Finger protection (YES or NO)   | YES |
| Operating temperature. max (°C) | 120 |
| Operating temperature. min (°C) | -40 |

## UL Recognized

|                            |     |
|----------------------------|-----|
| Rated voltage (Group B)(V) | 300 |
| Rated current (Group B)(A) | 15  |
| Rated voltage (Group D)(V) | 300 |
| Rated current (Group D)(A) | 10  |

## CUL Recognized

|                            |     |
|----------------------------|-----|
| Rated voltage (Group B)(V) | 300 |
| Rated current (Group B)(A) | 15  |
| Rated voltage (Group D)(V) | 300 |
| Rated current (Group D)(A) | 10  |

## VDE Approval

|                   |     |
|-------------------|-----|
| Rated voltage (V) | 600 |
| Rated current (A) | 18  |

## Drawings



## Approvals

