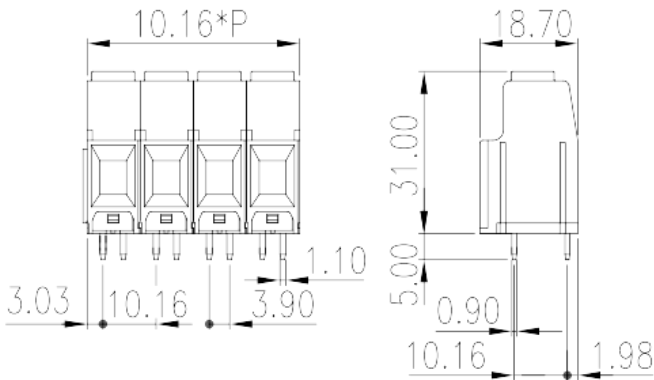
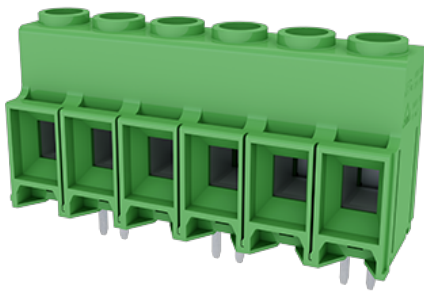


# EPK116VS-XXP

PCB Terminal Blocks > PCB Terminal Blocks

Date:2024-05-07Version:V1



The web catalog is for reference only. Dinkle remains the right of product modification and engineering change of the design.  
The final product is made according to engineering drawing.

## Product Description

Pitch : 10.16mm , 600V , 57sol/65str

## General information

|  |                                       |
|--|---------------------------------------|
| Short description                      | PCB Terminal Blocks, Screw Connection |
| Category                               | PCB Terminal Blocks                   |
| Pitch (mm)                             | 10.16                                 |
| Color                                  | Green (default)                       |
| Connection method                      | Screw Connection                      |
| Type of locking                        | Without                               |
| Length (mm)                            | 10.16*P                               |
| Width (mm)                             | 18.7                                  |
| Height (mm)                            | 31                                    |
| Pin demensions (Thickness x Width)(mm) | 1.1 x 0.9                             |
| PCB hole diameter (mm)                 | 1.5                                   |
| Number of positions                    | 02~12                                 |
| Level                                  | Single level                          |

## Material information

|                     |    |
|---------------------|----|
| Insulation material | PA |
|---------------------|----|

|  |                    |
|--|--------------------|
| Insulation material group                    | I                  |
| Flame retardant rating , compliant with UL94 | V0                 |
| Insulation resistance                        | ≥500 MΩ at DC 500V |
| Conductor material                           | COPPER ALLOY       |
| Plating of conductor surface                 | Tin PLATED         |

## Connection data-IEC

|   |         |
|---|---------|
| Rated voltage (V)   | 1000    |
| Rated current (A)   | 76      |
| Rated voltage (II/2)(V)   | 1000    |
| Rated voltage (III/2) (V)   | 1000    |
| Rated voltage (III/3)(V)  | 800     |
| Rated impulse voltage (II/2)(KV)  | 8       |
| Rated impulse voltage (III/2)(KV)   | 8       |
| Rated impulse voltage (III/3)(KV)   | 8       |
| Conductor cross section solid. min (mm²)  | 0.5     |
| Conductor cross section solid.max (mm²)   | 16      |
| Conductor cross section stranded. min (mm²)                                     | 0.5     |
| Conductor cross section stranded. max (mm²)                                     | 16      |
| Conductor cross section flexible, with min ferrule without plastic sleeve (mm²) | 0.5     |
| Conductor cross section flexible, with max ferrule without plastic sleeve (mm²) | 16      |
| Conductor cross section flexible, with min ferrule with plastic sleeve (mm²)    | 0.5     |
| Conductor cross section flexible, with max ferrule with plastic sleeve (mm²)    | 16      |
| 2 conductors with same cross section, solid, max (mm²)                          | 6       |
| 2 conductors with same cross section, stranded, max (mm²)                       | 6       |
| Screw thread  | M4      |
| Philips screwdriver size  | 1.0x5.5 |
| Rated torque (N.m)  | 1.2     |
| Recommend tightening torque. min (N.m)  | 1.3     |
| Recommend tightening torque. max (N.m)  | 1.4     |
| Stripping Length (mm)   | 12~13   |

## Connection data-UL

|   |               |
|---|---------------|
| Rated voltage (UL/CUL Group B)(V)               | 600           |
| Rated current (UL/CUL Group B)(A)               | 57sol/65str   |
| Rated voltage (UL/CUL Group C)(V)               | 600           |
| Rated current (UL/CUL Group C)(A)               | 57sol / 65str |
| Min. solid wire connection (AWG) acc. to UL/CUL | 20            |
| Max. solid wire connection AWG acc. to UL/CUL   | 6             |

## Environment & Safety

|                                 |     |
|---------------------------------|-----|
| Finger protection (YES or NO)   | YES |
| Operating temperature. max (°C) | 120 |
| Operating temperature. min (°C) | -40 |

## UL Recognized

|                            |      |
|----------------------------|------|
| Wire Range (Group B)(AWG)  | 20~6 |
| Rated voltage (Group B)(V) | 600  |
| Rated current (Group B)(A) | 65   |
| Wire Range (Group C)(AWG)  | 20~6 |
| Rated voltage (Group C)(V) | 600  |
| Rated current (Group C)(A) | 65   |

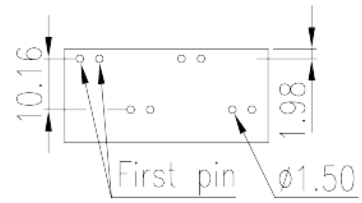
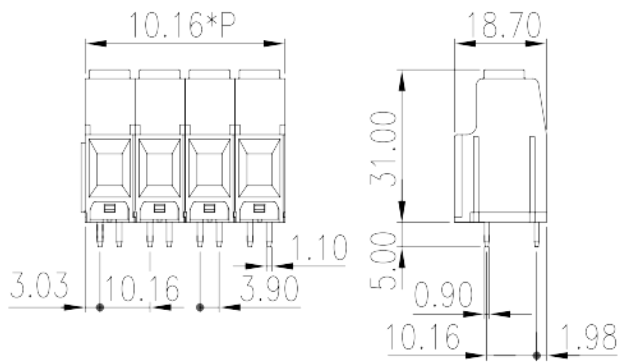
## CUL Recognized

|                            |      |
|----------------------------|------|
| Wire Range (Group B)(AWG)  | 20~6 |
| Rated voltage (Group B)(V) | 600  |
| Rated current (Group B)(A) | 65   |
| Wire Range (Group C)(AWG)  | 20~6 |
| Rated voltage (Group C)(V) | 600  |
| Rated current (Group C)(A) | 65   |

## VDE Approval

|                               |        |
|-------------------------------|--------|
| Wire Range (mm <sup>2</sup> ) | 0.5~16 |
| Rated voltage (V)             | 1000   |
| Rated current (A)             | 76     |

## Drawings



## Approvals

