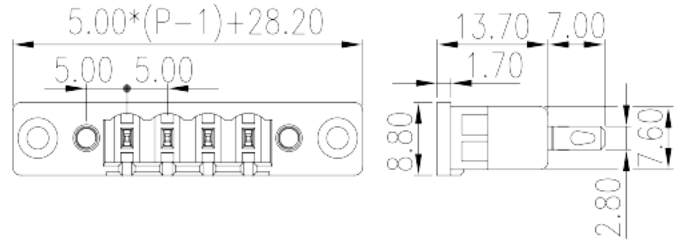
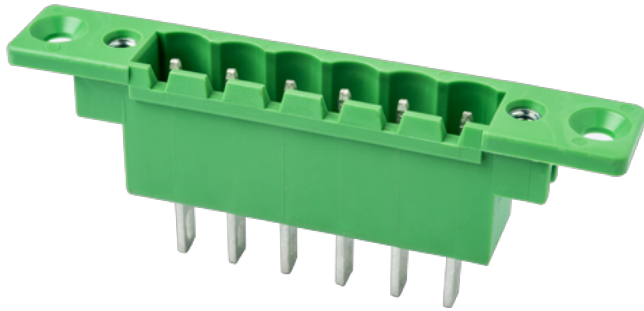


# 5EHDKPM-XXP

PCB Terminal Blocks &gt; PCB Connector-Socket

Date:2024-05-03Version:V1



The web catalog is for reference only. Dinkle remains the right of product modification and engineering change of the design.  
The final product is made according to engineering drawing.

## Product Description

Pitch : 5.00 mm, 300V, 15A

## General information

Short description	PCB Connector – Socket, Wave soldering
Category	PCB Connector – Socket
Pitch (mm)	5.00
Color	Green (default)
Type of locking	With threaded flange
Soldering method	Iron Soldering
Length (mm)	$5.00 \times (P-1) + 28.2$
Width (mm)	8.8
Height (mm)	13.7
Pin demensions (Thickness x Width)(mm)	2.8x0.8
Number of positions	02P~12P
Level	Single level

## Material information

Insulation material	PA
Insulation material group	I

Flame retardant rating , compliant with UL94	V0
Insulation resistance	□500MΩ at DC 500V
Conductor material	COPPER ALLOY
Plating of conductor surface	Tin PLATED

## Connection data-IEC

Rated voltage (V)	630
Rated current (A)	18
Rated voltage (II/2)(V)	630
Rated voltage (III/2) (V)	320
Rated voltage (III/3)(V)	320
Rated impulse voltage (II/2)(KV)	4
Rated impulse voltage (III/2)(KV)	4
Rated impulse voltage (III/3)(KV)	4
Conductor cross section solid. min (mm <sup>2</sup> )	0.2
Conductor cross section solid.max (mm <sup>2</sup> )	2.5
Conductor cross section stranded. min (mm <sup>2</sup> )	0.2
Conductor cross section stranded. max (mm <sup>2</sup> )	2.5
Tightening torque with flange. max (N.m)	0.3

## Connection data-UL

Rated voltage (UL/CUL Group B)(V)	300
Rated current (UL/CUL Group B)(A)	15
Rated voltage (UL/CUL Group D)(V)	300
Rated current (UL/CUL Group D)(A)	10
Min. solid wire connection (AWG) acc. to UL/CUL	24
Max. solid wire connection AWG acc. to UL/CUL	12
Min. stranded wire connection AWG acc. to UL/CUL	24
Max. stranded wire connection AWG acc. to UL/CUL	12

## Environment & Safety

Finger protection (YES or NO)	YES
Operating temperature. max (°C)	120
Operating temperature. min (°C)	-40

## UL Recognized

Rated voltage (Group B)(V)	300
Rated current (Group B)(A)	15
Rated voltage (Group D)(V)	300
Rated current (Group D)(A)	10

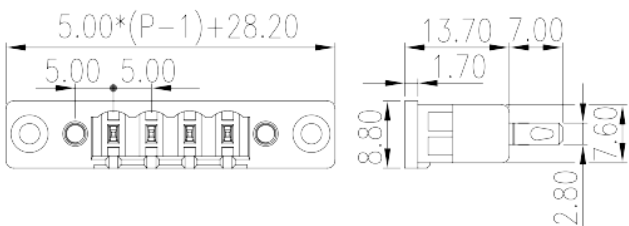
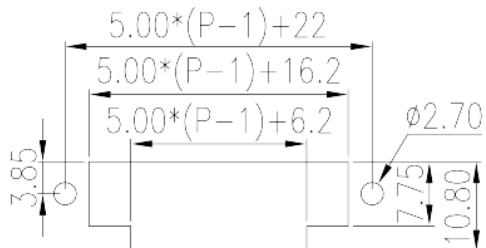
## CUL Recognized

Rated voltage (Group B)(V)	300
Rated current (Group B)(A)	15
Rated voltage (Group D)(V)	300
Rated current (Group D)(A)	10

## VDE Approval

Rated voltage (V)	600
Rated current (A)	18

## Drawings

 <p>Top view dimensions: <math>5.00 \times (P-1) + 28.20</math>, <math>5.00</math>, <math>5.00</math>.  Side view dimensions: <math>13.70</math>, <math>7.00</math>, <math>1.70</math>, <math>8.80</math>, <math>2.80</math>, <math>7.60</math>.</p>	 <p>Side view dimensions: <math>5.00 \times (P-1) + 22</math>, <math>5.00 \times (P-1) + 16.2</math>, <math>5.00 \times (P-1) + 6.2</math>, <math>3.85</math>, <math>\phi 2.70</math>, <math>7.75</math>, <math>10.80</math>.</p>
---	---

## Approvals

