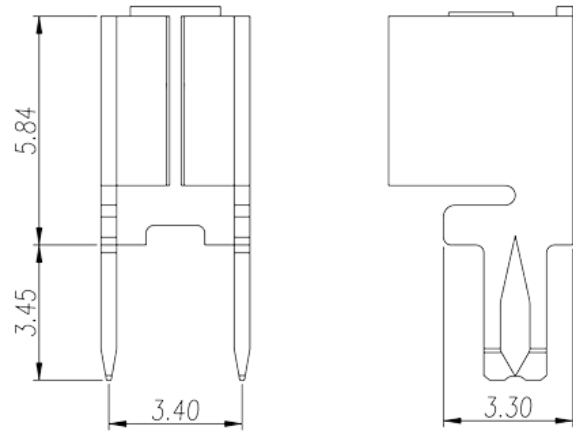


# P-620

Barriere-Anschlussblöcke &gt; Drahtterminal

Date:2026-04-08Version:1.2



The web catalog is for reference only. Dinkle remains the right of product modification and engineering change of the design. The final product is made according to engineering drawing.

## Produktbeschreibung

Pitch : 3.40mm, 0.4x1.6mm, 20A

## Allgemeine Informationen

Kurzbeschreibung	Barrier terminal blocks, Quick terminal blocks
Kategorie	Quick terminal blocks
Pitch (mm)	3.40
Pin-Abmessungen (StärkexBreite)	0.4x1.6

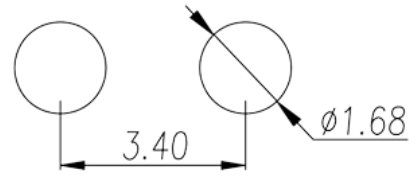
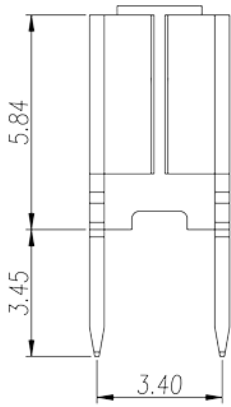
## Materialinformation

Leitermaterial	COPPER ALLOY
Oberflächenveredelung	Tin PLATED

## Verbindungsdaten nach IEC

Nennstrom (A)	20
---------------	----

## Zeichnungen



## Zulassungen

