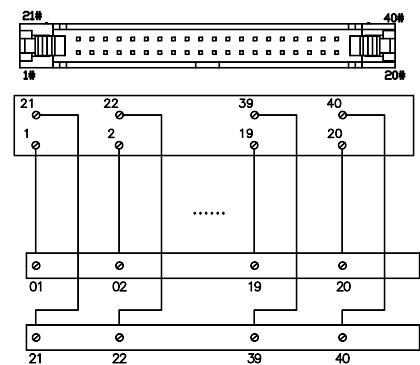


# 0241-C1XXS

Electronics & Interface > Signal Interface Modules



The web catalog is for reference only. Dinkle remains the right of product modification and engineering change of the design.  
The final product is made according to engineering drawing.

## Specification

Specification		
Connection method		Screw
Rated voltage		24 VDC
Rated current		1 A
Wire range		26~18 AWG
Stripping length		6~7 mm
Screw		M2.5
Rated torque (N-m)		0.5~0.6
Input type		NPN / PNP
Connector		IDC
Indicator		NO
Wire harness	Shielded	WHS33
	Unshielded	WHN33

Specification		
Part Number	Number of Connections	L x W x H (mm)
0241-C120S	20 poles	60.5 x 47.9 x 43
0241-C134S	34 poles	111.1 x 47.9 x 43
0241-C140S	40 poles	111.1 x 47.9 x 43



## Approvals

---

☒ **RoHS** ☒ **CE**