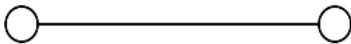
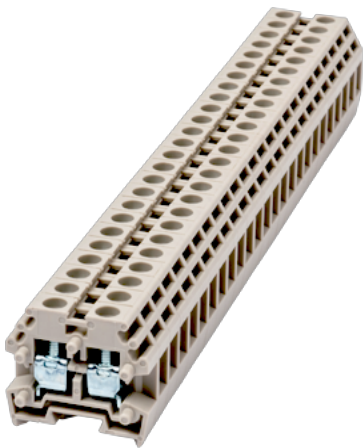


# PM2.5N

DIN Rail Terminal Blocks > Screw Connection

Date:2026-01-30Version:1.2



The web catalog is for reference only. Dinkle remains the right of product modification and engineering change of the design.  
The final product is made according to engineering drawing.

## Product Description

M2.5, 300V, 20A, Beige (default)

## General information

|                     |  |
|---------------------|--|
| Short description   | DIN rail terminal blocks, Panel mounting terminal blocks |
| Category            | Panel mounting terminal blocks                           |
| Color               | Beige (default)  |
| Connection method   | Screw connection   |
| Type of locking     | Panel mounting   |
| Length (mm)         | 5.1  |
| Width (mm)          | 22   |
| Height (mm)         | 20   |
| Number of positions | 01P~15P  |
| Level               | Single level   |
| Connection points   | 2  |

## Material information

|                           |    |
|---------------------------|----|
| Insulation material       | PA |
| Insulation material group | I  |

|  |    |
|--|----|
| Flame retardant rating , compliant with UL94 | V0 |
|--|----|

## Connection data-IEC

|  |         |
|--|---------|
| Rated voltage (V)  | 500     |
| Rated current (A)  | 24      |
| Rated voltage (III/3)(V)                                 | 500     |
| Rated impulse voltage (II/2)(KV)                         | 6       |
| Rated impulse voltage (III/2)(KV)                        | 6       |
| Rated impulse voltage (III/3)(KV)                        | 6       |
| Conductor cross section solid. min (mm <sup>2</sup> )    | 0.34    |
| Conductor cross section solid.max (mm <sup>2</sup> )     | 4       |
| Conductor cross section stranded. min (mm <sup>2</sup> ) | 0.34    |
| Conductor cross section stranded. max (mm <sup>2</sup> ) | 2.5     |
| Screw thread   | M2.5    |
| Slotted screwdriver size (Blade thickness x Width)(mm)   | 0.6x3.5 |
| Philips screwdriver size                                 | PH1     |
| Rated torque (N.m)                                       | 0.39    |
| Stripping Length (mm)                                    | 6~8     |
| End cover plate required                                 | YES     |
| Grounding connections                                    | NO      |

## Connection data-UL

|  |     |
|--|-----|
| Rated voltage (UL/CUL Group B)(V)                | 300 |
| Rated current (UL/CUL Group B)(A)                | 20  |
| Rated voltage (UL/CUL Group C)(V)                | 300 |
| Rated current (UL/CUL Group C)(A)                | 20  |
| Rated voltage (UL/CUL Group D)(V)                | 600 |
| Rated current (UL/CUL Group D)(A)                | 5   |
| Min. solid wire connection (AWG) acc. to UL/CUL  | 22  |
| Max. solid wire connection AWG acc. to UL/CUL    | 12  |
| Min. stranded wire connection AWG acc. to UL/CUL | 22  |
| Max. stranded wire connection AWG acc. to UL/CUL | 12  |

## Environment & Safety

|   |     |
|---|-----|
| Back of the hand protection (YES or NO) | YES |
|---|-----|

|                                 |     |
|---------------------------------|-----|
| Finger protection (YES or NO)   | YES |
| Operating temperature. max (°C) | 120 |
| Operating temperature. min (°C) | -40 |

## UL Recognized

|                            |       |
|----------------------------|-------|
| Wire Range (Group B)(AWG)  | 22~12 |
| Rated voltage (Group B)(V) | 300   |
| Rated current (Group B)(A) | 20    |
| Wire Range (Group C)(AWG)  | 22~12 |
| Rated voltage (Group C)(V) | 300   |
| Rated current (Group C)(A) | 20    |
| Wire Range (Group D)(AWG)  | 22~12 |
| Rated voltage (Group D)(V) | 600   |
| Rated current (Group D)(A) | 5     |

## CUL Recognized

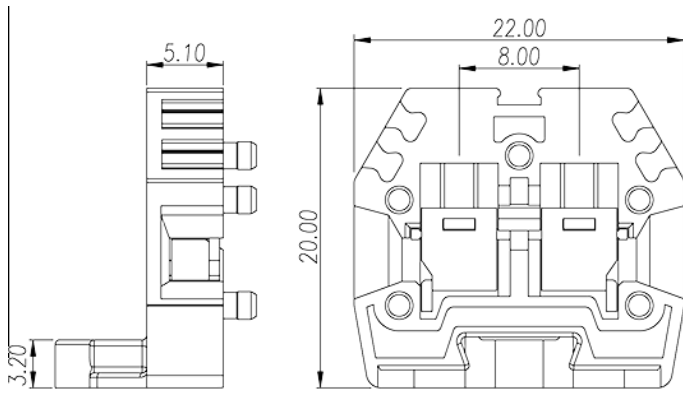
|                            |       |
|----------------------------|-------|
| Wire Range (Group B)(AWG)  | 22~12 |
| Rated voltage (Group B)(V) | 300   |
| Rated current (Group B)(A) | 20    |
| Wire Range (Group C)(AWG)  | 22~12 |
| Rated voltage (Group C)(V) | 300   |
| Rated current (Group C)(A) | 20    |
| Wire Range (Group D)(AWG)  | 22~12 |
| Rated voltage (Group D)(V) | 600   |
| Rated current (Group D)(A) | 5     |

## VDE Approval

|                               |          |
|-------------------------------|----------|
| Wire Range (mm <sup>2</sup> ) | 0.34~2.5 |
| Rated voltage (V)             | 500      |
| Rated current (A)             | 24       |

## Drawings

|  |  |
|--|--|
|  |  |
|--|--|



## Approvals

