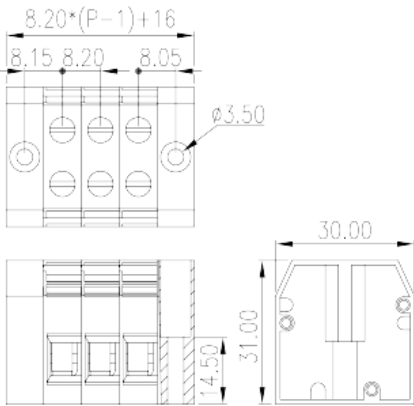
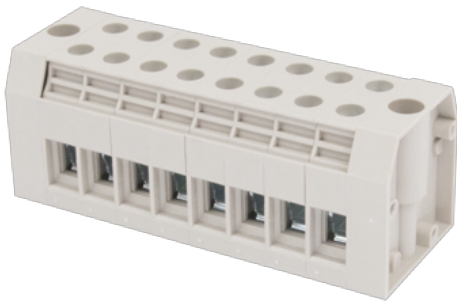


PM10-XXP

NEMA Terminal Blocks > Panel Mounting

Date:2024-05-14



The web catalog is for reference only. Dinkle remains the right of product modification and engineering change of the design.
The final product is made according to engineering drawing.

Product Description

300V, 45A, Beige (default)

General information

Short description	Feed-through Panel Type
Category	Feed-through Panel Type
Pitch (mm)	8.199999999999999
Color	Beige (default)
Connection method	Screw Connection
Type of locking	Panel Mounting
Length (mm)	30
Width (mm)	8.199999999999999
Height (mm)	31
Number of positions	01P~12P
Level	Single level
Connection points	2

Material information

Insulation material	PA
Insulation material group	I

Flame retardant rating , compliant with UL94	V0
Insulation resistance	□500MΩ at DC 500V

Connection data-IEC

Rated voltage (V)	400
Rated current (A)	57
Rated voltage (III/3)(V)	400
Rated impulse voltage (III/3)(KV)	6
Conductor cross section solid. min (mm ²)	0.5
Conductor cross section solid.max (mm ²)	10
Conductor cross section stranded. min (mm ²)	0.5
Conductor cross section stranded. max (mm ²)	10
Conductor cross section flexible, with min ferrule without plastic sleeve (mm ²)	0.5
Conductor cross section flexible, with max ferrule without plastic sleeve (mm ²)	10
Conductor cross section flexible, with min ferrule with plastic sleeve (mm ²)	0.5
Conductor cross section flexible, with max ferrule with plastic sleeve (mm ²)	6
2 conductors with same cross section, solid, min (mm ²)	0.5
2 conductors with same cross section, solid, max (mm ²)	6
2 conductors with same cross section, stranded, min (mm ²)	0.5
2 conductors with same cross section, stranded, max (mm ²)	6
2 conductors with same cross section flexible, with min ferrule without plastic sleeve (mm ²)	0.5
2 conductors with same cross section flexible, with max ferrule without plastic sleeve (mm ²)	6
2 conductors with same cross section flexible, min twin ferrules with plastic sleeve (mm ²)	0.5
2 conductors with same cross section flexible, max twin ferrules with plastic sleeve (mm ²)	4
Screw thread	M4
Slotted screwdriver size (Blade thickness x Width)(mm)	1.0x5.5
Rated torque (N.m)	1.7
Stripping Length (mm)	12~13
End cover plate required	NO

Grounding connections	NO
-----------------------	----

Connection data-UL

Rated voltage (UL/CUL Group B)(V)	300
Rated current (UL/CUL Group B)(A)	45
Rated voltage (UL/CUL Group C)(V)	300
Rated current (UL/CUL Group C)(A)	45
Min. solid wire connection (AWG) acc. to UL/CUL	22
Max. solid wire connection AWG acc. to UL/CUL	8
Min. stranded wire connection AWG acc. to UL/CUL	22
Max. stranded wire connection AWG acc. to UL/CUL	8

Environment & Safety

Back of the hand protection (YES or NO)	YES
Finger protection (YES or NO)	YES
Operating temperature. max (°C)	120
Operating temperature. min (°C)	-40

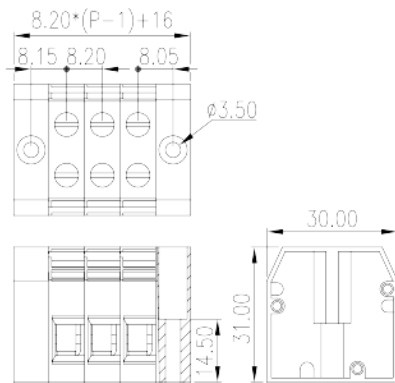
UL Recognized

Wire Range (Group B)(AWG)	22~8
Rated voltage (Group B)(V)	300
Rated current (Group B)(A)	45
Wire Range (Group C)(AWG)	22~8
Rated voltage (Group C)(V)	300
Rated current (Group C)(A)	45

CUL Recognized

Wire Range (Group B)(AWG)	22~8
Rated voltage (Group B)(V)	300
Rated current (Group B)(A)	45
Wire Range (Group C)(AWG)	22~8
Rated voltage (Group C)(V)	300
Rated current (Group C)(A)	45

Drawings



Approvals

