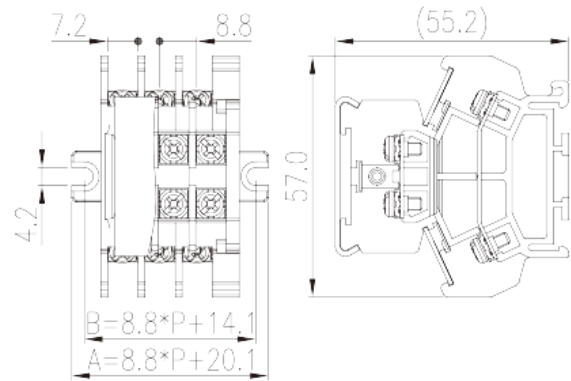
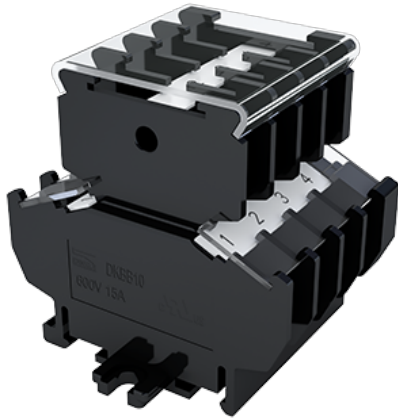


# DKBB10-XXPCK

NEMA Terminal Blocks &gt; Panel Mounting

Date:2025-04-30



The web catalog is for reference only. Dinkle remains the right of product modification and engineering change of the design.  
The final product is made according to engineering drawing.

## Product Description

Pitch : 8.80mm, M3, 600V, 15A

## General information

|                     |  |
|---------------------|--|
| Short description   | Barrier terminals blocks, Panel Mounting |
| Category            | Panel Mounting                           |
| Pitch (mm)          | 8.80                                     |
| Color               | Black (default)                          |
| Connection method   | Screw connection                         |
| Type of locking     | Panel Mounting                           |
| Length (mm)         | $8.80 \times P + 20.1$                   |
| Width (mm)          | 57                                       |
| Height (mm)         | 55.2                                     |
| Number of positions | 02P~12P                                  |
| Level               | Double level                             |
| Connection points   | 4~24                                     |

## Material information

|                           |      |
|---------------------------|------|
| Insulation material       | PC   |
| Insulation material group | IIIa |

|  |                    |
|--|--------------------|
| Flame retardant rating , compliant with UL94 | V2                 |
| Insulation resistance                        | □1000MΩ at DC 500V |
| Conductor material                           | Copper Alloy       |
| Plating of conductor surface                 | Ni plated          |

## Connection data-IEC

|  |                   |
|--|-------------------|
| Rated voltage (V)  | 800               |
| Rated current (A)  | 24                |
| Rated voltage (III/3)(V)   | 800               |
| Rated impulse voltage (III/3)(KV)                                      | 8                 |
| Conductor cross section solid. min (mm <sup>2</sup> )                  | 0.34              |
| Conductor cross section solid.max (mm <sup>2</sup> )                   | 2.5               |
| Conductor cross section stranded. min (mm <sup>2</sup> )               | 0.34              |
| Conductor cross section stranded. max (mm <sup>2</sup> )               | 2.5               |
| 2 conductors with same cross section, solid, max (mm <sup>2</sup> )    | 2.5               |
| 2 conductors with same cross section, stranded, max (mm <sup>2</sup> ) | 2.5               |
| Screw thread   | M3                |
| Slotted screwdriver size (Blade thickness x Width)(mm)                 | 0.8x4.0           |
| Philips screwdriver size   | PH2               |
| Rated torque (N.m)   | 0.5               |
| Recommend tightening torque. min (N.m)                                 | 0.5               |
| Recommend tightening torque. max (N.m)                                 | 0.6               |
| Stripping Length (mm)  | 7~8               |
| Mounting rail  | TS-35N 、TS-35/15N |
| End cover plate required   | YES               |
| Grounding connections  | NO                |

## Connection data-UL

|   |     |
|---|-----|
| Rated voltage (UL/CUL Group B)(V)               | 600 |
| Rated current (UL/CUL Group B)(A)               | 15  |
| Rated voltage (UL/CUL Group C)(V)               | 600 |
| Rated current (UL/CUL Group C)(A)               | 15  |
| Min. solid wire connection (AWG) acc. to UL/CUL | 22  |
| Max. solid wire connection AWG acc. to UL/CUL   | 14  |

|  |    |
|--|----|
| Min. stranded wire connection AWG acc. to UL/CUL | 22 |
| Max. stranded wire connection AWG acc. to UL/CUL | 14 |

## Environment & Safety

|   |     |
|---|-----|
| Back of the hand protection (YES or NO) | YES |
| Finger protection (YES or NO)           | NO  |
| Operating temperature. max (°C)         | 125 |
| Operating temperature. min (°C)         | -40 |

## UL Recognized

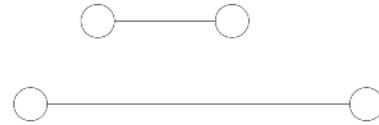
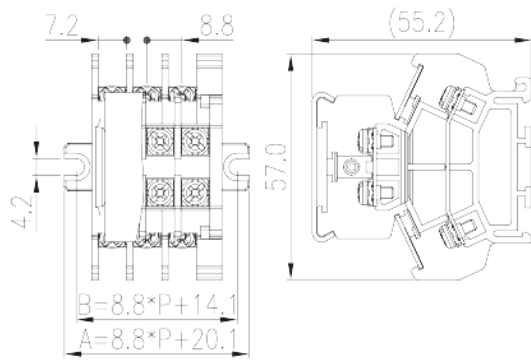
|                            |       |
|----------------------------|-------|
| Wire Range (Group B)(AWG)  | 22-14 |
| Rated voltage (Group B)(V) | 600   |
| Rated current (Group B)(A) | 15    |
| Wire Range (Group C)(AWG)  | 22-14 |
| Rated voltage (Group C)(V) | 600   |
| Rated current (Group C)(A) | 15    |

## CUL Recognized

|                            |       |
|----------------------------|-------|
| Wire Range (Group B)(AWG)  | 22-14 |
| Rated voltage (Group B)(V) | 600   |
| Rated current (Group B)(A) | 15    |
| Wire Range (Group C)(AWG)  | 22-14 |
| Rated voltage (Group C)(V) | 600   |
| Rated current (Group C)(A) | 15    |

## Drawings

|  |  |
|--|--|
|  |  |
|--|--|



## Approvals

