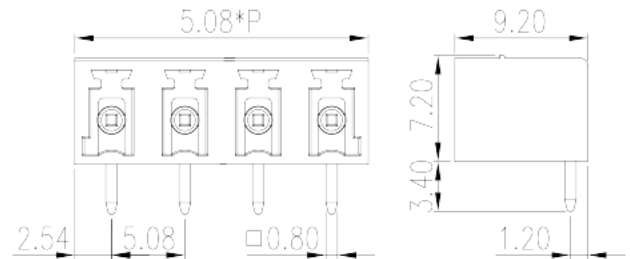
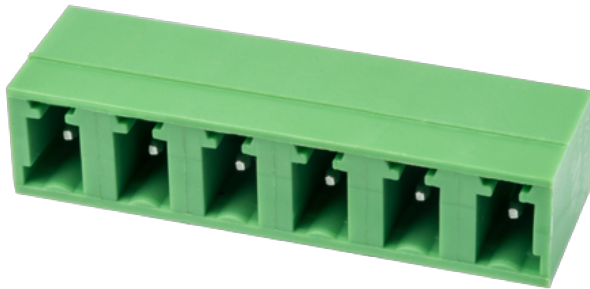


# ECH508R-XXP

PCB Terminal Blocks &gt; PCB Connector-Socket

Date:2025-08-04Version:V1



The web catalog is for reference only. Dinkle remains the right of product modification and engineering change of the design.  
The final product is made according to engineering drawing.

## Product Description

Pitch : 5.08 mm, 300V, 12A

## General information

|  |  |
|--|--|
| Short description                      | PCB Connector – Socket, Wave soldering |
| Category                               | PCB Connector – Socket                 |
| Pitch (mm)                             | 5.08                                   |
| Color                                  | Green (default)                        |
| Type of locking                        | Without                                |
| Soldering method                       | Wave soldering                         |
| Length (mm)                            | 5.08*P                                 |
| Width (mm)                             | 9.2                                    |
| Height (mm)                            | 7.2                                    |
| Pin demensions (Thickness x Width)(mm) | 0.8x0.8                                |
| PCB hole diameter (mm)                 | 1.2~1.3                                |
| Number of positions                    | 02P~24P                                |
| Level                                  | Single level                           |

## Material information

|                     |    |
|---------------------|----|
| Insulation material | PA |
|---------------------|----|

|  |                   |
|--|-------------------|
| Insulation material group                    | I                 |
| Flame retardant rating , compliant with UL94 | V0                |
| Insulation resistance                        | □500MΩ at DC 500V |
| Conductor material                           | COPPER ALLOY      |
| Plating of conductor surface                 | Tin PLATED        |

## Connection data-IEC

|                                   |     |
|-----------------------------------|-----|
| Rated voltage (V)                 | 600 |
| Rated current (A)                 | 14  |
| Rated voltage (II/2)(V)           | 600 |
| Rated voltage (III/2) (V)         | 320 |
| Rated voltage (III/3)(V)          | 250 |
| Rated impulse voltage (II/2)(KV)  | 4   |
| Rated impulse voltage (III/2)(KV) | 4   |
| Rated impulse voltage (III/3)(KV) | 4   |

## Connection data-UL

|                                   |     |
|-----------------------------------|-----|
| Rated voltage (UL/CUL Group B)(V) | 300 |
| Rated current (UL/CUL Group B)(A) | 12  |
| Rated voltage (UL/CUL Group D)(V) | 300 |
| Rated current (UL/CUL Group D)(A) | 10  |

## Environment & Safety

|                                 |     |
|---------------------------------|-----|
| Finger protection (YES or NO)   | YES |
| Operating temperature. max (°C) | 120 |
| Operating temperature. min (°C) | -40 |

## UL Recognized

|                            |     |
|----------------------------|-----|
| Rated voltage (Group B)(V) | 300 |
| Rated current (Group B)(A) | 12  |
| Rated voltage (Group D)(V) | 300 |
| Rated current (Group D)(A) | 10  |

## CUL Recognized

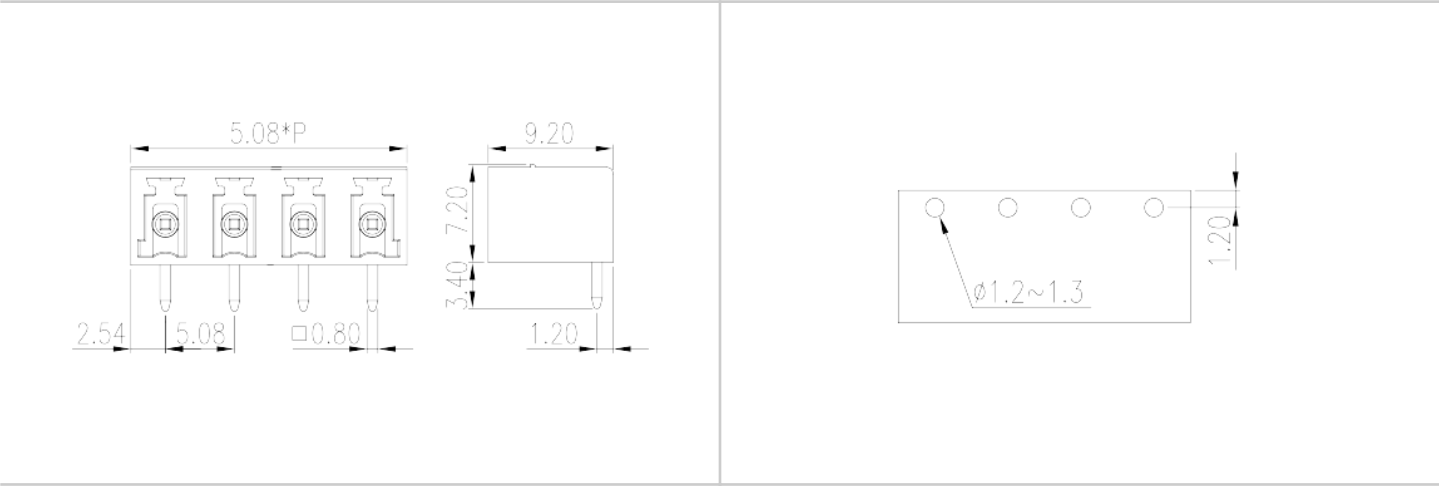
|                            |     |
|----------------------------|-----|
| Rated voltage (Group B)(V) | 300 |
|----------------------------|-----|

|                            |     |
|----------------------------|-----|
| Rated current (Group B)(A) | 12  |
| Rated voltage (Group D)(V) | 300 |
| Rated current (Group D)(A) | 10  |

### VDE Approval

|                   |     |
|-------------------|-----|
| Rated voltage (V) | 600 |
| Rated current (A) | 14  |

### Drawings



### Approvals

