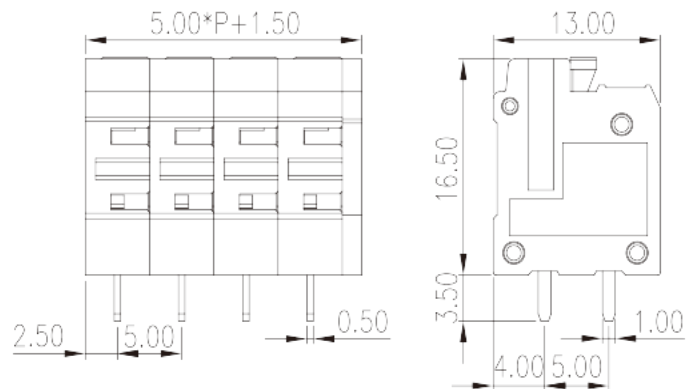
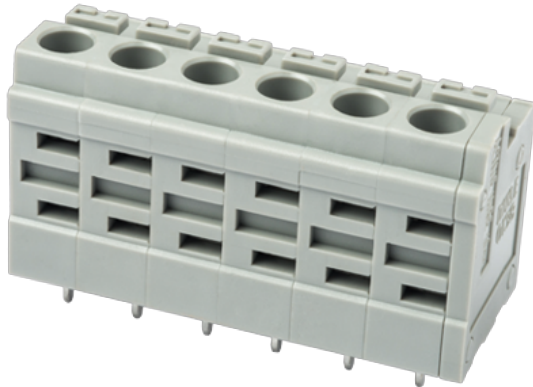


# 0138-70XX

PCB Terminal Blocks &gt; PCB Terminal Blocks

Date:2026-02-02Version:V1



The web catalog is for reference only. Dinkle remains the right of product modification and engineering change of the design.  
The final product is made according to engineering drawing.

## Product Description

Pitch : 5.00mm, 300V, 10A

## General information

|  |                                     |
|--|-------------------------------------|
| Short description                      | PCB Terminal Blocks, Push-in Design |
| Category                               | PCB Terminal Blocks                 |
| Pitch (mm)                             | 5.00                                |
| Color                                  | Grey (default)                      |
| Connection method                      | Push in design                      |
| Type of locking                        | Without                             |
| Soldering method                       | Wave soldering                      |
| Length (mm)                            | $5.00 \times (P-1) + 6.5$           |
| Width (mm)                             | 13                                  |
| Height (mm)                            | 16.5                                |
| Pin dimensions (Thickness x Width)(mm) | 0.5x1.0                             |
| PCB hole diameter (mm)                 | 1.3                                 |
| Number of positions                    | 02P~24P                             |
| Level                                  | Single level                        |

## Material information

|  |                   |
|--|-------------------|
| Insulation material                          | PA                |
| Insulation material group                    | I                 |
| Flame retardant rating , compliant with UL94 | V0                |
| Insulation resistance                        | □500MΩ at DC 500V |
| Conductor material                           | COPPER ALLOY      |
| Plating of conductor surface                 | Tin PLATED        |

## Connection data-IEC

|  |         |
|--|---------|
| Rated voltage (V)  | 320     |
| Rated current (A)  | 17.5    |
| Rated voltage (II/2)(V)  | 630     |
| Rated voltage (III/2) (V)  | 320     |
| Rated voltage (III/3)(V)   | 320     |
| Rated impulse voltage (II/2)(KV)   | 4       |
| Rated impulse voltage (III/2)(KV)  | 4       |
| Rated impulse voltage (III/3)(KV)  | 4       |
| Conductor cross section solid. min (mm <sup>2</sup> )  | 0.2     |
| Conductor cross section solid.max (mm <sup>2</sup> )   | 1.5     |
| Conductor cross section stranded. min (mm <sup>2</sup> )                                     | 0.2     |
| Conductor cross section stranded. max (mm <sup>2</sup> )                                     | 1.5     |
| Conductor cross section flexible, with min ferrule without plastic sleeve (mm <sup>2</sup> ) | 0.25    |
| Conductor cross section flexible, with max ferrule without plastic sleeve (mm <sup>2</sup> ) | 1       |
| Conductor cross section flexible, with min ferrule with plastic sleeve (mm <sup>2</sup> )    | 0.25    |
| Conductor cross section flexible, with max ferrule with plastic sleeve (mm <sup>2</sup> )    | 1       |
| Slotted screwdriver size (Blade thickness x Width)(mm)                                       | 0.4x2.5 |
| Stripping Length (mm)  | 10~11   |

## Connection data-UL

|   |     |
|---|-----|
| Rated voltage (UL/CUL Group B)(V)               | 300 |
| Rated current (UL/CUL Group B)(A)               | 10  |
| Rated voltage (UL/CUL Group D)(V)               | 300 |
| Rated current (UL/CUL Group D)(A)               | 10  |
| Min. solid wire connection (AWG) acc. to UL/CUL | 26  |

|  |    |
|--|----|
| Max. solid wire connection AWG acc. to UL/CUL    | 14 |
| Min. stranded wire connection AWG acc. to UL/CUL | 26 |
| Max. stranded wire connection AWG acc. to UL/CUL | 14 |

## Environment & Safety

|                                 |     |
|---------------------------------|-----|
| Finger protection (YES or NO)   | YES |
| Operating temperature. max (°C) | 120 |
| Operating temperature. min (°C) | -40 |

## UL Recognized

|                            |            |
|----------------------------|------------|
| Wire Range (Group B)(AWG)  | 26~14(SOL) |
| Rated voltage (Group B)(V) | 300        |
| Rated current (Group B)(A) | 10         |
| Wire Range (Group D)(AWG)  | 26~14(SOL) |
| Rated voltage (Group D)(V) | 300        |
| Rated current (Group D)(A) | 10         |

## CUL Recognized

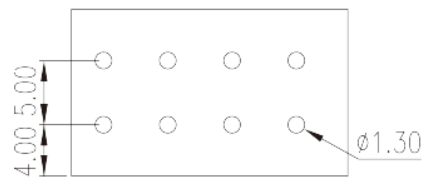
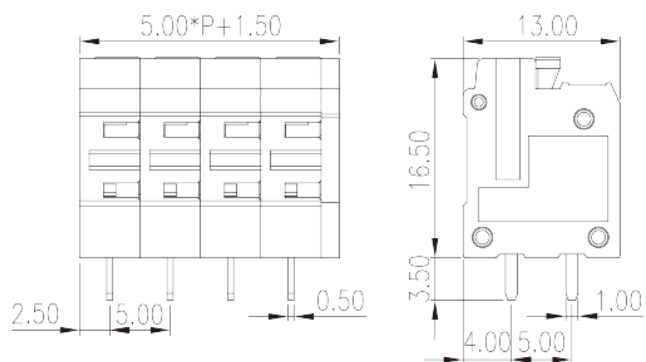
|                            |            |
|----------------------------|------------|
| Wire Range (Group B)(AWG)  | 26~14(SOL) |
| Rated voltage (Group B)(V) | 300        |
| Rated current (Group B)(A) | 10         |
| Wire Range (Group D)(AWG)  | 26~14(SOL) |
| Rated voltage (Group D)(V) | 300        |
| Rated current (Group D)(A) | 10         |

## VDE Approval

|                               |         |
|-------------------------------|---------|
| Wire Range (mm <sup>2</sup> ) | 0.2~1.5 |
| Rated voltage (V)             | 320     |
| Rated current (A)             | 17.5    |

## Drawings

|  |  |
|--|--|
|  |  |
|--|--|



## Approvals

