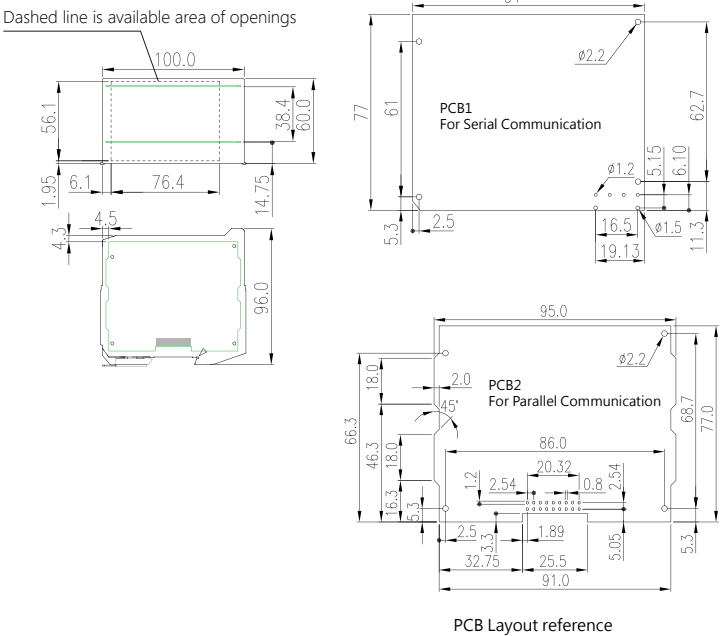


BS-555X

Enclosure for Either Serial or Parallel Communication



Specification

Main housing	BS-555X-01
Side housing	BS-555X-02
Dimensions (L x H x W)	100 x 96 x 60 mm
The following is reference or selection for application.	
Terminal block	0138-51XX、0138-61XX、0156-15XX、0156-17XX、0156-18XX、0156-19XX、0156-1AXX、0156-1BXX、0156-1CXX、0156-1DXX、0171-10XX、0171-11XX、0171-20XX、0171-21XX、0177-31XX、0177-51XX、0184-11XX、0184-31XX、0184-51XX、0184-81XX、0188-01XXL、0188-01XXSMD、0225-01XX、0225-02XX、0225-03XX、0225-13XX、0225-23XX、0225-33XX、0228-22XX、0228-23XX
Bus connector	BS-100、BS-110
Marking Label	TM42W
PCB1	-
PCB2	-