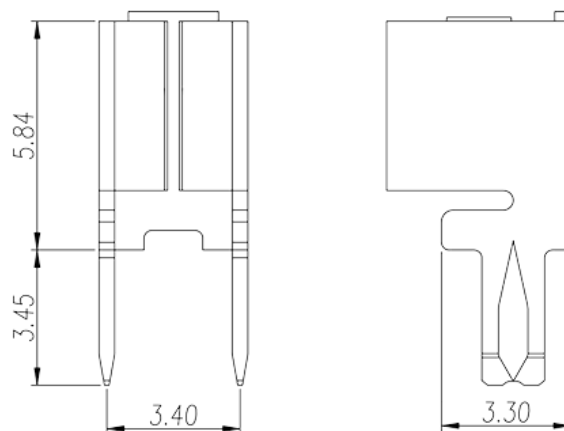
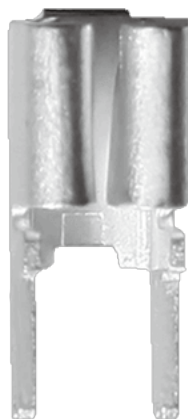


# P-620

Bornas de Conexión de Barrera &gt; Terminal de cable

Date:2024-05-27Version:1.2



The web catalog is for reference only. Dinkle remains the right of product modification and engineering change of the design. The final product is made according to engineering drawing.

## Descripción del producto

Pitch : 3.40mm, 0.4x1.6mm, 20A

## Informacion General

Descripción corta	Barrier terminal blocks, Quick terminal blocks
CategoryCategoría	Quick terminal blocks
Paso(mm)	3.40
Dimensiones del pin (Espesor x anchura)	0.4x1.6

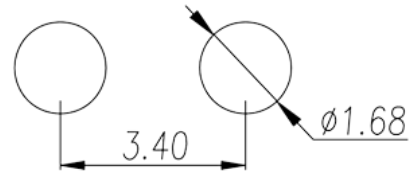
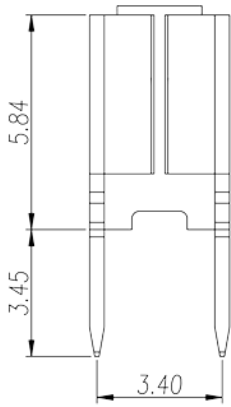
## Informacion materia prima

Conductor	COPPER ALLOY
Acabado	Tin PLATED

## Datos IEC

Máxima corriente (A)	20
----------------------	----

## Dibujo



## Aprobaciones

