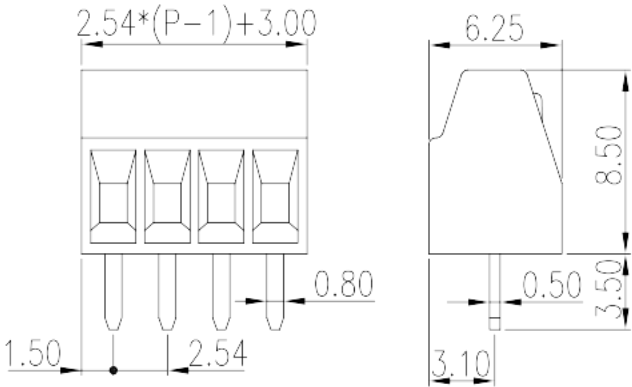
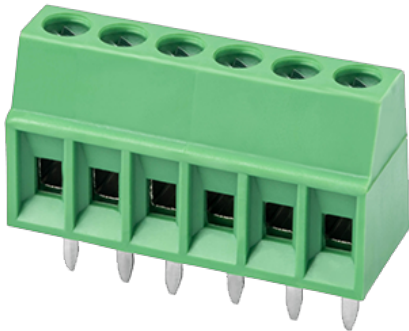


EK254V-XXP

PCB > PCB

:2026-02-09 :V1



Pitch : 2.54mm, 150V, 10A

	PCB Terminal Blocks, Screw Connection
	PCB Terminal Blocks
(mm)	2.54
	Green (default)
	Screw Connection
	Without
(mm)	$2.50 \times (P-1) + 3.0$
(mm)	6.25
(mm)	8.5
(x) (mm)	0.5x0.8
PCB (mm)	1.1
()	02P~16P
	Single level
	PA
	I
UL 94	V0



	500M at DC 500V
	COPPER ALLOY
	Tin PLATED

-IEC

(V)	160
(A)	8
(II/2)(V)	320
(III/2)(V)	160
(III/3)(V)	160
(II/2)(KV)	2.5
(III/2)(KV)	2.5
(III/3)(KV)	2.5
(mm ²)	0.2
(mm ²)	1.5
(mm ²)	0.2
(mm ²)	1.5
(mm ²) , ,	0.25
(mm ²) , ,	0.5
(mm ²) , ,	0.25
(mm ²) , ,	0.34
	M1.6
Width)(mm) (Blade thickness x	0.4x2.0
(N.m)	0.2
	4~5

-UL

(UL/CUL Group B)(V)	150
(UL/CUL Group B)(A)	10
UL/CUL AWG	28
UL/CUL AWG	16
UL/CUL AWG	28

UL/CUL	AWG	16
--------	-----	----

&

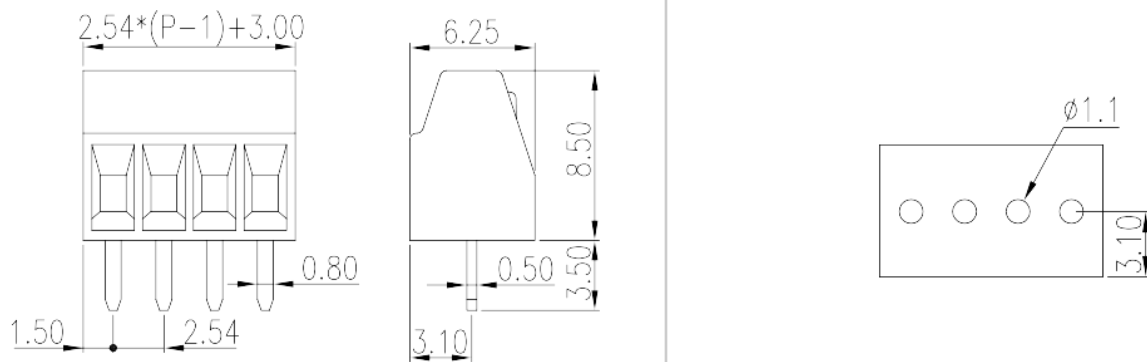
가 (YES or NO)	YES
	120
	-40

UL

(Group B) (AWG)	28~16
(Group B) (V)	150
(Group B) (A)	10

CUL

(Group B) (AWG)	28~16
(Group B) (V)	150
(Group B) (A)	10





Delight Through Connections