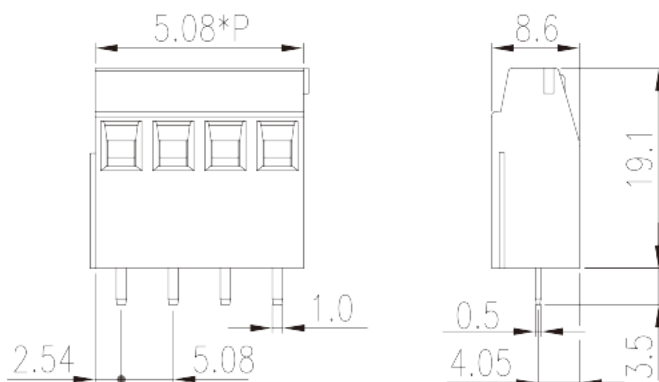
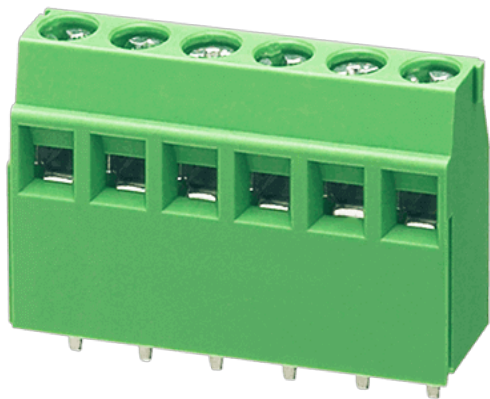


E2LK508V-XXP

PCB > PCB

:2026-05-14 :V1



Pitch : 5.08mm, 300V, 13.5A

		PCB Terminal Blocks, Screw Connection
		PCB Terminal Blocks
(mm)		5.08
		Green (default)
		Screw Connection
		Without
(mm)		5.08*(P-1)+5.08
(mm)		8.6
(mm)		19.1
() x () (mm)		0.5x1.0
PCB (mm)		1.3
()		02P~24P
		Single level
		PA
		I
UL 94		V0



	500M at DC 500V
	COPPER ALLOY
	Tin PLATED

-IEC

(V)	320
(A)	13.5
(II/2)(V)	630
(III/2)(V)	320
(III/3)(V)	250
(II/2)(KV)	4
(III/2)(KV)	4
(III/3)(KV)	4
(mm ²)	0.5
(mm ²)	1.5
(mm ²)	0.5
(mm ²)	1.5
(mm ²) , ,	0.5
(mm ²) , ,	0.75
(mm ²) , ,	0.5
(mm ²) , ,	0.75
2 (mm ²)	0.5
2 (mm ²)	0.75
2 (mm ²)	0.5
2 (mm ²)	0.75
(mm ²) 2 , ,	0.5
(mm ²) 2 , ,	0.5
2 (mm ²) , ,	0.5
2 (mm ²) , ,	0.5
	M2.5



Width) (mm)	(Blade thickness x	0.6x3.5
	(N.m)	0.4
	(N.m)	0.5
		6~7

-UL

(UL/CUL Group B)(V)		300
(UL/CUL Group B)(A)		13.5
(UL/CUL Group D)(V)		300
(UL/CUL Group D)(A)		10
UL/CUL	AWG	30
UL/CUL	AWG	14
UL/CUL	AWG	30
UL/CUL	AWG	14

&

가	(YES or NO)	YES
		120
		-40

UL

(Group B)(AWG)		30~14
(Group B)(V)		300
(Group B)(A)		13.5
(Group D)(AWG)		30~14
(Group D)(V)		300
(Group D)(A)		10

CUL

(Group B)(AWG)		30~14
(Group B)(V)		300
(Group B)(A)		13.5
(Group D)(AWG)		30~14
(Group D)(V)		300

(Group D)(A)

10

