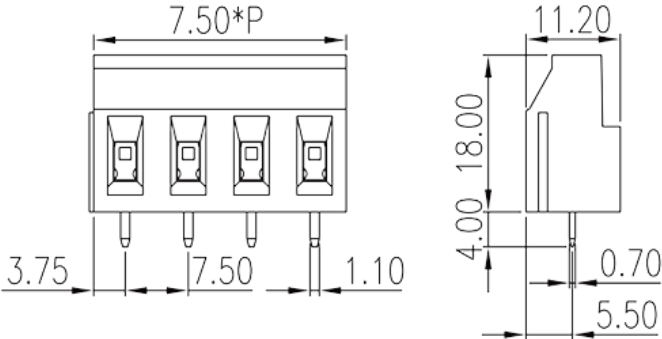
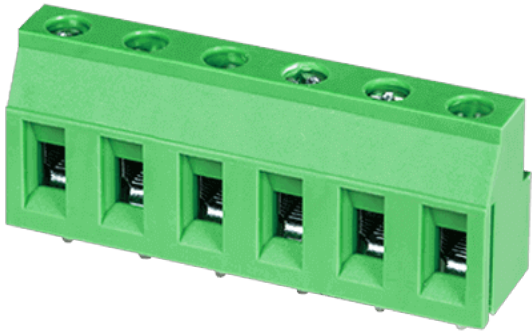


# EHK7V-XXP

PCB > PCB

:2026-02-09 :V1



Pitch : 7.50mm, 300V, 25A(FW1)/20A(FW2)

	PCB Terminal Blocks, Screw Connection
	PCB Terminal Blocks
(mm)	7.50
	Green (default)
	Screw Connection
	Without
(mm)	7.50*(P-1)+7.5
(mm)	11.2
(mm)	18
(    x    ) (mm)	0.7x1.1
PCB        (mm)	1.5~1.7
(    )	02P~16P
	Single level
	PA
	I
UL 94	V0



	500M at DC 500V
	COPPER ALLOY
	Tin PLATED
<b>-IEC</b>	
(V)	630
(A)	24
(II/2)(V)	1000
(III/2)(V)	630
(III/3)(V)	500
(II/2)(KV)	6
(III/2)(KV)	6
(III/3)(KV)	6
(mm <sup>2</sup> )	0.2
(mm <sup>2</sup> )	2.5
(mm <sup>2</sup> )	0.2
(mm <sup>2</sup> )	2.5
(mm <sup>2</sup> ) , ,	0.5
(mm <sup>2</sup> ) , ,	2.5
(mm <sup>2</sup> ) , ,	0.5
(mm <sup>2</sup> ) , ,	2.5
2 (mm <sup>2</sup> )	1
2 (mm <sup>2</sup> )	2.5
(mm <sup>2</sup> ) <sup>2</sup> , ,	0.5
(mm <sup>2</sup> ) <sup>2</sup> , ,	1.5
(mm <sup>2</sup> ) <sup>2</sup> , ,	0.5
(mm <sup>2</sup> ) <sup>2</sup> , ,	1.5
	M2.5
Width)(mm) (Blade thickness x	0.6x3.5
(N.m)	0.4

8~9

## -UL

(UL/CUL Group B)(V)	300
(UL/CUL Group B)(A)	25(FW1)/20(FW2)
(UL/CUL Group D)(V)	300
(UL/CUL Group D)(A)	10
UL/CUL AWG	24
UL/CUL AWG	12
UL/CUL AWG	24
UL/CUL AWG	12

## &

가 (YES or NO)	YES
	120
	-40

## UL

(Group B)(AWG)	24~12
(Group B)(V)	300
(Group B)(A)	25(FW1)/20(FW2)
(Group D)(AWG)	24~12
(Group D)(V)	300
(Group D)(A)	10

## CUL

(Group B)(AWG)	24~12
(Group B)(V)	300
(Group B)(A)	25(FW1)/20(FW2)
(Group D)(AWG)	24~12
(Group D)(V)	300
(Group D)(A)	10

## VDE

(mm <sup>2</sup> )	0.2~2.5
--------------------	---------

(V)	600
(A)	24

