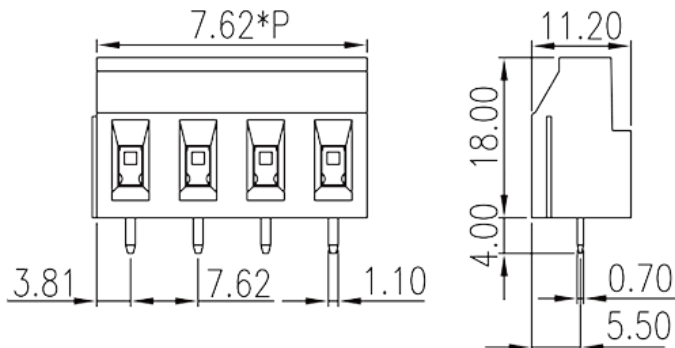
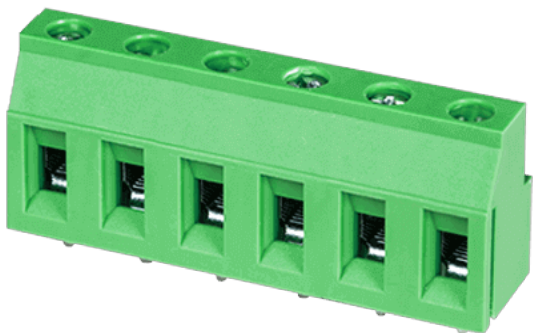


EHK3V-XXP

PCB > PCB

:2026-07-05 :V1



Pitch : 7.62mm, 300V, 25A(FW1)/20A(FW2)

		PCB Terminal Blocks, Screw Connection
		PCB Terminal Blocks
(mm)		7.62
		Green (default)
		Screw Connection
		Without
(mm)		$7.62 * (P-1) + 7.62$
(mm)		11.2
(mm)		18
(x) (mm)		0.7x1.1
PCB	(mm)	1.6
()		02P~16P
		Single level
		PA
		I
UL 94		V0



	500M at DC 500V
	COPPER ALLOY
	Tin PLATED

-IEC

(V)	630
(A)	24
(II/2)(V)	1000
(III/2)(V)	630
(III/3)(V)	500
(II/2)(KV)	6
(III/2)(KV)	6
(III/3)(KV)	6
(mm ²)	0.5
(mm ²)	2.5
(mm ²)	0.5
(mm ²)	2.5
(mm ²) , ,	0.25
(mm ²) , ,	2.5
(mm ²) , ,	0.25
(mm ²) , ,	2.5
(mm ²) ² , ,	0.5
(mm ²) ² , ,	1.5
(mm ²) ² , ,	0.5
(mm ²) ² , ,	1.5
	M2.5
Width)(mm) (Blade thickness x	0.6x3.5
(N.m)	0.45
	8~9

-UL



(UL/CUL Group B)(V)		300
(UL/CUL Group B)(A)		25(FW1)/20(FW2)
(UL/CUL Group D)(V)		300
(UL/CUL Group D)(A)		10
UL/CUL	AWG	24
UL/CUL	AWG	12
UL/CUL	AWG	24
UL/CUL	AWG	12

&

가	(YES or NO)	YES
		120
		-40

UL

(Group B)(AWG)		24~12
(Group B)(V)		300
(Group B)(A)		25(FW1)/20(FW2)
(Group D)(V)		300
(Group D)(A)		10

CUL

(Group B)(AWG)		24~12
(Group B)(V)		300
(Group B)(A)		25(FW1)/20(FW2)
(Group D)(AWG)		24~12
(Group D)(V)		300
(Group D)(A)		10

VDE

(mm ²)		0.5~2.5
(V)		600
(A)		24

