

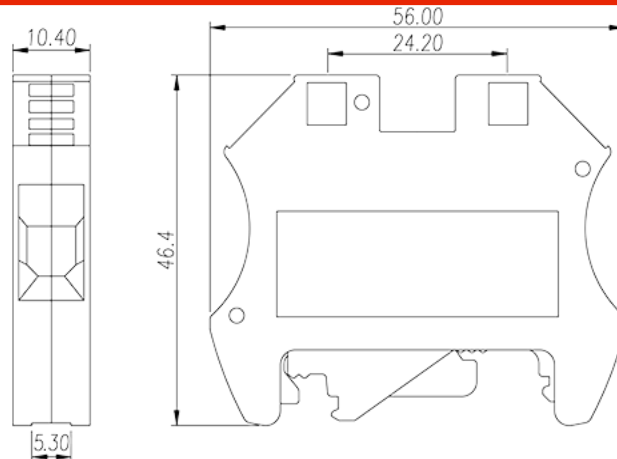
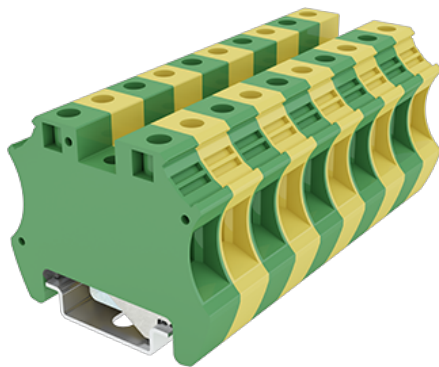
DK10-PE

DIN

>

:2026-07-04

:1.2



M4, 600V, Green-Yellow (default)

	DIN rail terminal blocks, Grounding terminal blocks
	Grounding terminal blocks
	Green-Yellow (default)
	Screw connection
	Rail mounting
(mm)	10.4
(mm)	56
(mm)	46.4
()	1P
	Single level
	2
	PA
	I
UL 94	V0
	500M at DC 500V

-IEC

(II/2)(KV)	6
(III/2)(KV)	6
(III/3)(KV)	6
(mm ²)	1.5
(mm ²)	10
(mm ²)	1.5
(mm ²)	10
(mm ²) , ,	1.5
(mm ²) , ,	10
(mm ²) , ,	1.5
(mm ²) , ,	10
2 (mm ²)	4
2 (mm ²)	4
(mm ²) 2 , ,	1.5
(mm ²) 2 , ,	2.5
2 (mm ²) , ,	1.5
2 (mm ²) , ,	6
	M4
Width)(mm) (Blade thickness x	1.0x5.5
Philips	PH2
(N.m)	1.76
	22~16
	TS-35
	NO
	YES

-UL

(UL/CUL Group B)(V)	600
(UL/CUL Group C)(V)	600



(UL/CUL Group D)(V)		600
UL/CUL	AWG	16
UL/CUL	AWG	8
UL/CUL	AWG	16
UL/CUL	AWG	8

&

(YES or NO)		YES
가 (YES or NO)		YES
		120
		-40

UL

(Group B)(AWG)		16~8
(Group B)(V)		600
(Group C)(AWG)		16~8
(Group C)(V)		600
(Group D)(AWG)		16~8
(Group D)(V)		600

CUL

(Group B)(AWG)		16~8
(Group B)(V)		600
(Group C)(AWG)		16~8
(Group C)(V)		600
(Group D)(AWG)		16~8
(Group D)(V)		600

VDE

(mm ²)		1.5~10
--------------------	--	--------

--	--	--

