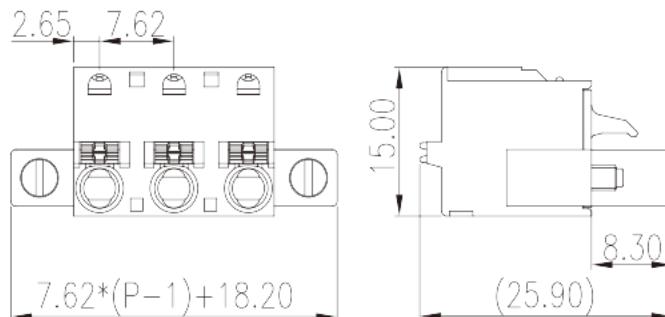
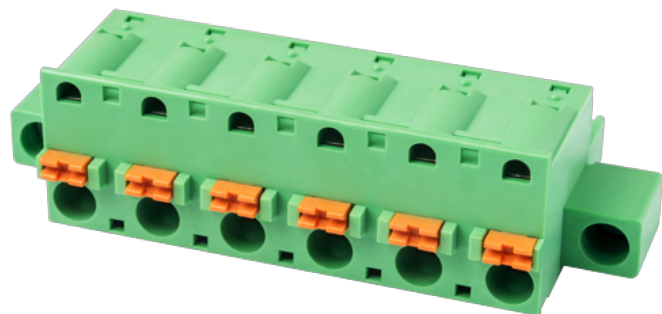


3ESDSRM-XXP

PCB > PCB -

:2026-07-04 :1.1



Pitch : 7.62 mm, 300V, 10A

	PCB Connector – Plug, Push-in Design
	PCB Connector Plug
(mm)	7.62
	Green (default)
	Push in Design
	With screw flange
(mm)	$7.62 * (P - 1) + 18.20$
(mm)	25.9
(mm)	15
()	02P~12P
	Single level
	PA
	I
UL 94	V0
	500M at DC 500V
	COPPER ALLOY

Tin PLATED

-IEC

(V)	1000
(A)	15
(II/2)(V)	1000
(III/2)(V)	630
(III/3)(V)	500
(II/2)(KV)	6
(III/2)(KV)	6
(III/3)(KV)	6
(mm ²)	0.2
(mm ²)	2.5
(mm ²)	0.2
(mm ²)	2.5
(mm ²) , ,	0.25
(mm ²) , ,	1.5
(mm ²) , ,	0.25
(mm ²) , ,	1.5
2 (mm ²) , ,	0.5
2 (mm ²) , ,	1
Philips	0.6x3.5
	10~11

-UL

(UL/CUL Group B)(V)	300
(UL/CUL Group B)(A)	10
(UL/CUL Group D)(V)	300
(UL/CUL Group D)(A)	10
UL/CUL AWG	26
UL/CUL AWG	12
UL/CUL AWG	26



UL/CUL	AWG	12
&		
가	(YES or NO)	YES
		120
		-40

UL

(Group B)(AWG)	26~12
(Group B)(V)	300
(Group B)(A)	10
(Group D)(AWG)	26~12
(Group D)(V)	300
(Group D)(A)	10

CUL

(Group B)(AWG)	26~12
(Group B)(V)	300
(Group B)(A)	10
(Group D)(AWG)	26~12
(Group D)(V)	300
(Group D)(A)	10

VDE

(mm ²)	0.2~2.5
(V)	800
(A)	15

--	--

