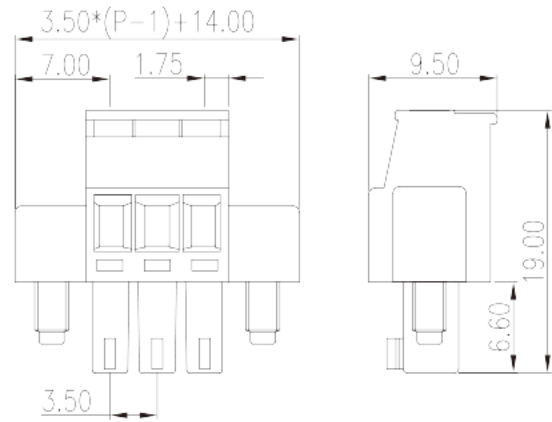
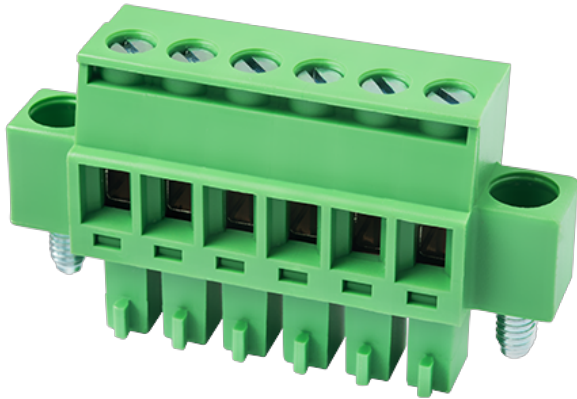


# EC350RM-XXP

PCB &gt; PCB -

:2026-05-14 :1.1



Pitch : 3.50 mm, 300V, 8A

	PCB Connector – Plug, Screw Connection
	PCB Connector – Plug
(mm)	3.50
	Green (default)
	Screw Connection
	With screw flange
(mm)	$3.50 \times (P-1) + 14.00$
(mm)	9.5
(mm)	19
( )	02P~20P
	Single level
	PA
	I
UL 94	V0
	500M at DC 500V
	COPPER ALLOY

		Tin PLATED
<b>-IEC</b>		
(V)		320
(A)		14
(II/2)(V)		320
(III/2)(V)		160
(III/3)(V)		160
(II/2)(KV)		2.5
(III/2)(KV)		2.5
(III/3)(KV)		2.5
(mm <sup>2</sup> )		0.2
(mm <sup>2</sup> )		1.5
(mm <sup>2</sup> )		0.2
(mm <sup>2</sup> )		1.5
(mm <sup>2</sup> )	,	0.25
(mm <sup>2</sup> )	,	0.75
(mm <sup>2</sup> )	,	0.25
(mm <sup>2</sup> )	,	0.5
2	(mm <sup>2</sup> )	0.2
2	(mm <sup>2</sup> )	0.75
2	(mm <sup>2</sup> )	0.2
2	(mm <sup>2</sup> )	0.75
(mm <sup>2</sup> ) <sup>2</sup>	,	0.5
(mm <sup>2</sup> ) <sup>2</sup>	,	0.5
(mm <sup>2</sup> ) <sup>2</sup>	,	0.5
(mm <sup>2</sup> ) <sup>2</sup>	,	0.5
		M2
Width)(mm)	(Blade thickness x	0.4x2.5
Philips		PH0

(N.m)	0.2
	6~7

### -UL

(UL/CUL Group B)(V)	300
(UL/CUL Group B)(A)	8
(UL/CUL Group D)(V)	300
(UL/CUL Group D)(A)	8
UL/CUL AWG	28
UL/CUL AWG	14
UL/CUL AWG	28
UL/CUL AWG	14

### &

가 (YES or NO)	YES
	120
	-40

### UL

(Group B)(AWG)	28~14
(Group B)(V)	300
(Group B)(A)	8
(Group D)(AWG)	28~14
(Group D)(V)	300
(Group D)(A)	8

### CUL

(Group B)(AWG)	28~14
(Group B)(V)	300
(Group B)(A)	8
(Group D)(AWG)	28~14
(Group D)(V)	300
(Group D)(A)	8

### VDE

--	--

(mm <sup>2</sup> )	0.2~1.5
(V)	320
(A)	14

