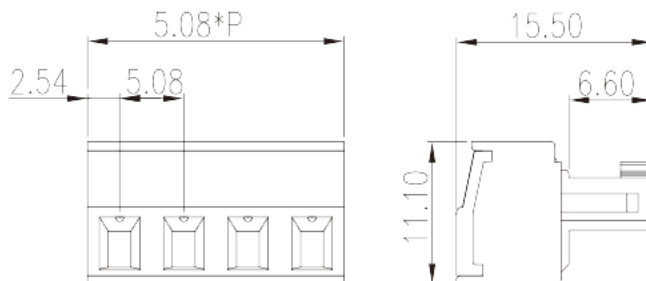
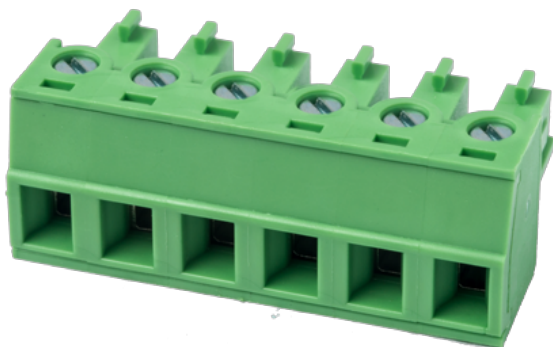


EC508V-XXP

PCB > PCB -

:2026-07-04 :1.1



Pitch : 5.08 mm, 300V, 12A

	PCB Connector - Plug, Screw Connection
	PCB Connector - Plug
(mm)	5.08
	Green (default)
	Screw Connection
	Without
(mm)	5.08*P
(mm)	15.5
(mm)	11.1
()	02P~24P
	Single level
	PA
	I
UL 94	V0
	500M at DC 500V
	COPPER ALLOY

Tin PLATED

-IEC

(V)	630
(A)	14
(II/2)(V)	600
(III/2)(V)	320
(III/3)(V)	250
(II/2)(KV)	4
(III/2)(KV)	4
(III/3)(KV)	4
(mm ²)	0.2
(mm ²)	1.5
(mm ²)	0.2
(mm ²)	1.5
(mm ²) , ,	0.25
(mm ²) , ,	1.5
(mm ²) , ,	0.25
(mm ²) , ,	0.5
2 (mm ²)	0.75
2 (mm ²)	0.75
(mm ²) ² , ,	0.25
(mm ²) ² , ,	0.34
2 (mm ²) , ,	0.5
2 (mm ²) , ,	0.5
	M2
Width)(mm) (Blade thickness x	0.4x2.5
Philips	PH0
(N.m)	0.2
	8~9

-UL

(UL/CUL Group B)(V)		300
(UL/CUL Group B)(A)		12
(UL/CUL Group D)(V)		300
(UL/CUL Group D)(A)		10
UL/CUL	AWG	30
UL/CUL	AWG	14
UL/CUL	AWG	30
UL/CUL	AWG	14

&

가	(YES or NO)	YES
		120
		-40

UL

(Group B)(AWG)		30~14
(Group B)(V)		300
(Group B)(A)		12
(Group D)(AWG)		30~14
(Group D)(V)		300
(Group D)(A)		10

CUL

(Group B)(AWG)		30~14
(Group B)(V)		300
(Group B)(A)		12
(Group D)(AWG)		30~14
(Group D)(V)		300
(Group D)(A)		10

VDE

(mm ²)		0.2~1.5
(V)		600

(A)

14

