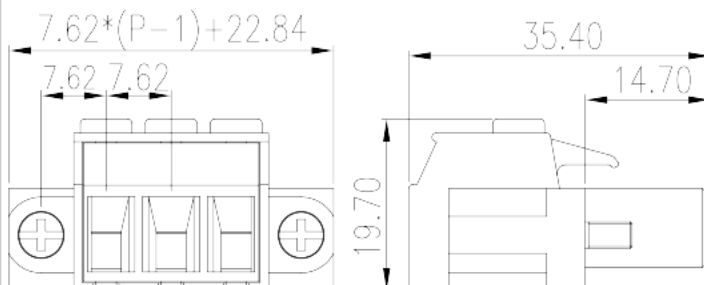
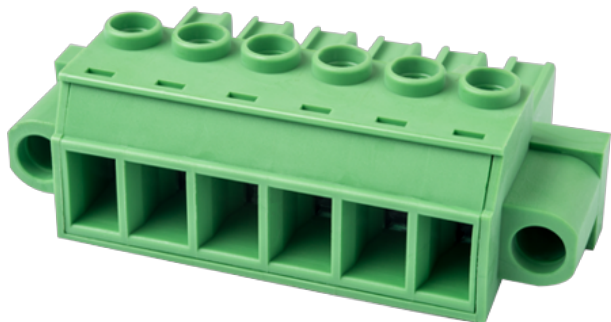


# EC762HVM-XXP

PCB > PCB -

:2026-07-05 :1.1



Pitch : 7.62 mm, 600V, 41A

	PCB Connector - Plug, Screw Connection
	PCB Connector - Plug
(mm)	7.62
	Green (default)
	Screw Connection
	With screw flange
(mm)	$7.62 * (P-1) + 7.6$
(mm)	35.4
(mm)	19.7
( )	02P~12P
	Single level
	PA
	I
UL 94	V0
	500M at DC 500V
	COPPER ALLOY



Tin PLATED

**-IEC**

(V)	1000
(A)	41
(II/2)(V)	1000
(III/2)(V)	1000
(III/3)(V)	1000
(II/2)(KV)	6
(III/2)(KV)	8
(III/3)(KV)	8
(mm <sup>2</sup> )	0.2
(mm <sup>2</sup> )	6
(mm <sup>2</sup> )	0.2
(mm <sup>2</sup> )	6
(mm <sup>2</sup> ) , ,	0.25
(mm <sup>2</sup> ) , ,	4
(mm <sup>2</sup> ) , ,	0.25
(mm <sup>2</sup> ) , ,	4
2 (mm <sup>2</sup> )	0.2
2 (mm <sup>2</sup> )	2.5
2 (mm <sup>2</sup> )	0.2
2 (mm <sup>2</sup> )	2.5
(mm <sup>2</sup> ) <sup>2</sup> , ,	0.5
(mm <sup>2</sup> ) <sup>2</sup> , ,	1.5
2 (mm <sup>2</sup> ) , ,	0.5
2 (mm <sup>2</sup> ) , ,	1.5
	M3
Width)(mm) (Blade thickness x	0.8x4.0
Philips	PH2

(N.m)	0.7
	7~8

### -UL

(UL/CUL Group B)(V)	600
(UL/CUL Group B)(A)	41
(UL/CUL Group C)(V)	600
(UL/CUL Group C)(A)	41
(UL/CUL Group D)(V)	600
(UL/CUL Group D)(A)	41
UL/CUL AWG	30
UL/CUL AWG	8
UL/CUL AWG	30
UL/CUL AWG	8

### &

가 (YES or NO)	YES
	120
	-40

### UL

(Group B)(AWG)	30~8
(Group B)(V)	600
(Group B)(A)	41
(Group C)(AWG)	30~8
(Group C)(V)	600
(Group C)(A)	41
(Group D)(AWG)	30~8
(Group D)(V)	600
(Group D)(A)	5

### CUL

(Group B)(AWG)	30~8
(Group B)(V)	600
(Group B)(A)	41

(Group C) (AWG)	30~8
(Group C) (V)	600
(Group C) (A)	41
(Group D) (AWG)	30~8
(Group D) (V)	600
(Group D) (A)	5

## VDE

(mm <sup>2</sup> )	0.2~6
(V)	1000
(A)	41

