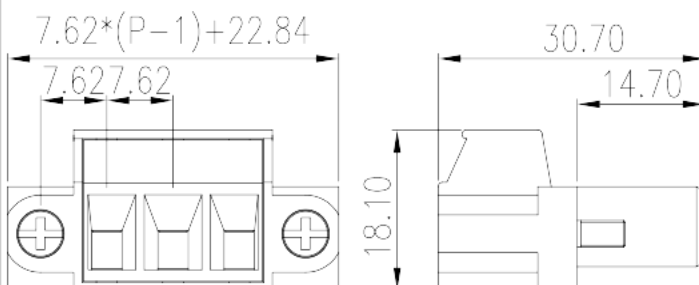
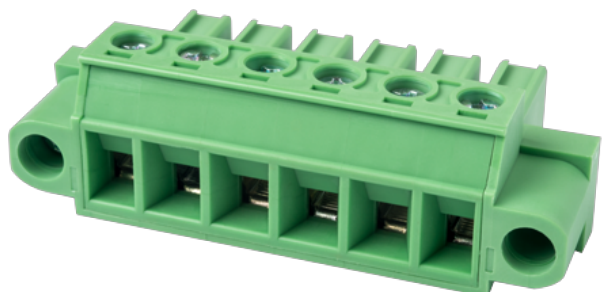


EC762VNM-XXP

PCB > PCB -

:2026-07-05 :1.1



Pitch : 7.62 mm, 300V, 30A

	PCB Connector – Plug, Screw Connection
	PCB Connector – Plug
(mm)	7.62
	Green (default)
	Screw Connection
	With screw flange
(mm)	$7.62 * (P - 1) + 7.60$
(mm)	30.7
(mm)	18.1
()	02P~12P
	Single level
	PA
	I
UL 94	V0
	500M at DC 500V
	COPPER ALLOY

: +886-2-8069-9000 / : service@dinkle.com



Tin PLATED

-IEC

(V)	1000
(A)	41
(II/2)(V)	1000
(III/2)(V)	630
(III/3)(V)	400
(II/2)(KV)	6
(III/2)(KV)	6
(III/3)(KV)	6
(mm ²)	0.2
(mm ²)	4
(mm ²)	0.2
(mm ²)	4
(mm ²) , ,	0.25
(mm ²) , ,	4
(mm ²) , ,	0.25
(mm ²) , ,	4
2 (mm ²)	0.2
2 (mm ²)	2.5
2 (mm ²)	0.2
2 (mm ²)	2.5
(mm ²) ² , ,	0.5
(mm ²) ² , ,	1.5
2 (mm ²) , ,	0.5
2 (mm ²) , ,	1.5
	M3
Width)(mm) (Blade thickness x	0.8x4.0
Philips	PH2

(N.m)	0.7
	7~8

-UL

(UL/CUL Group B)(V)	300
(UL/CUL Group B)(A)	30
(UL/CUL Group D)(V)	300
(UL/CUL Group D)(A)	10
UL/CUL AWG	30
UL/CUL AWG	10
UL/CUL AWG	30
UL/CUL AWG	10

&

가 (YES or NO)	YES
	120
	-40

UL

(Group B)(AWG)	30~10
(Group B)(V)	300
(Group B)(A)	30
(Group D)(AWG)	30~10
(Group D)(V)	300
(Group D)(A)	10

CUL

(Group B)(AWG)	30~10
(Group B)(V)	300
(Group B)(A)	30
(Group D)(AWG)	30~10
(Group D)(V)	300
(Group D)(A)	10

VDE

--	--

(mm ²)	0.2~4
(V)	1000
(A)	41

