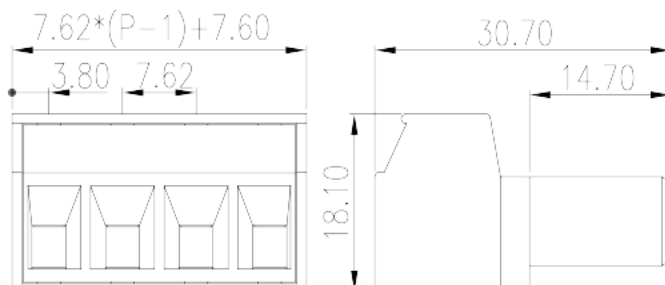
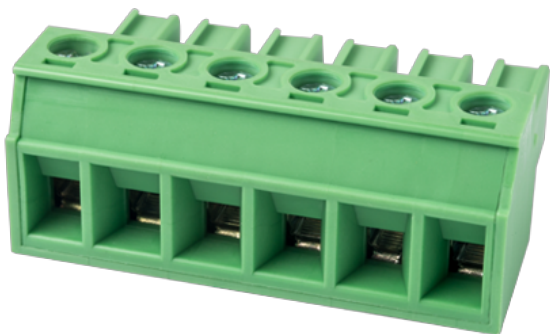


# EC762VN-XXP

PCB > PCB -

:2026-05-14 :1.1



Pitch : 7.62 mm, 300V, 30A

	PCB Connector – Plug, Screw Connection
	PCB Connector – Plug
(mm)	7.62
	Green (default)
	Screw Connection
	Without
(mm)	$7.62 * (P-1) + 7.6$
(mm)	30.7
(mm)	18.1
( )	02P~12P
	Single level
	PA
	I
UL 94	V0
	500M at DC 500V
	COPPER ALLOY



Tin PLATED

**-IEC**

(V)	1000
(A)	32
(II/2)(V)	1000
(III/2)(V)	630
(III/3)(V)	400
(II/2)(KV)	6
(III/2)(KV)	6
(III/3)(KV)	6
(mm <sup>2</sup> )	0.2
(mm <sup>2</sup> )	4
(mm <sup>2</sup> )	0.2
(mm <sup>2</sup> )	4
(mm <sup>2</sup> ) , ,	0.25
(mm <sup>2</sup> ) , ,	4
(mm <sup>2</sup> ) , ,	0.25
(mm <sup>2</sup> ) , ,	4
2 (mm <sup>2</sup> )	0.2
2 (mm <sup>2</sup> )	2.5
2 (mm <sup>2</sup> )	0.2
2 (mm <sup>2</sup> )	0.5
(mm <sup>2</sup> ) <sup>2</sup> , ,	0.5
(mm <sup>2</sup> ) <sup>2</sup> , ,	1.5
2 (mm <sup>2</sup> ) , ,	0.5
2 (mm <sup>2</sup> ) , ,	1.5
	M3
Width)(mm) (Blade thickness x	0.8x4.0
Philips	PH2



(N.m)	0.7
	7~8

**-UL**

(UL/CUL Group B)(V)	300
(UL/CUL Group B)(A)	30
(UL/CUL Group D)(V)	300
(UL/CUL Group D)(A)	10
UL/CUL AWG	30
UL/CUL AWG	10
UL/CUL AWG	30
UL/CUL AWG	10

**&**

가 (YES or NO)	YES
	120
	-40

**UL**

(Group B)(AWG)	30~10
(Group B)(V)	300
(Group B)(A)	30
(Group D)(AWG)	30~10
(Group D)(V)	300
(Group D)(A)	10

**CUL**

(Group B)(AWG)	30~10
(Group B)(V)	300
(Group B)(A)	30
(Group D)(AWG)	30~10
(Group D)(V)	300
(Group D)(A)	10

**VDE**

--	--

(mm <sup>2</sup> )	0.2~4
(V)	1000
(A)	32

