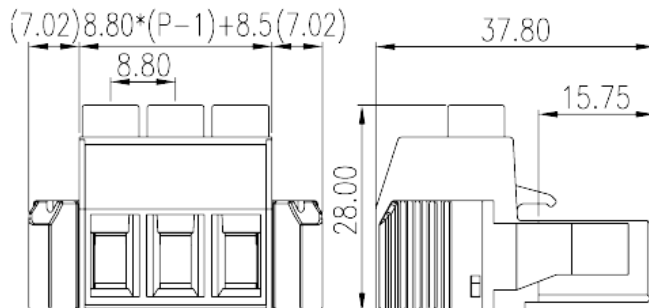
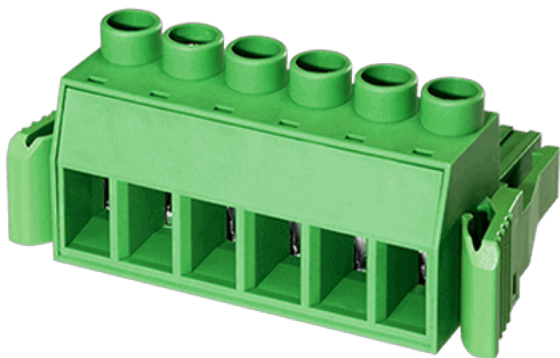


# EC880HVT-XXP

PCB > PCB -

:2026-07-05 :1.1



Pitch : 8.80 mm, 600V, 65A

	PCB Connector Plug, Screw Connection
	PCB Connector Plug
(mm)	8.80
	Green (default)
	Screw Connection
	With lock flange
(mm)	$8.80 \times (P-1) + 22.54$
(mm)	37.8
(mm)	28
( )	02~12
	Single level
	PA
	I
UL 94	V0
	500M at DC 500V
	Copper Alloy



	Tinned
<b>-IEC</b>	
(V)	1000
(A)	57
(II/2)(V)	1000
(III/2)(V)	1000
(III/3)(V)	800
(II/2)(KV)	8
(III/2)(KV)	8
(III/3)(KV)	8
(mm <sup>2</sup> )	0.2
(mm <sup>2</sup> )	10
(mm <sup>2</sup> )	0.2
(mm <sup>2</sup> )	10
(mm <sup>2</sup> ) , ,	0.5
(mm <sup>2</sup> ) , ,	6
(mm <sup>2</sup> ) , ,	0.25
(mm <sup>2</sup> ) , ,	4
2 (mm <sup>2</sup> )	4
2 (mm <sup>2</sup> )	4
(mm <sup>2</sup> ) <sup>2</sup> , ,	0.25
(mm <sup>2</sup> ) <sup>2</sup> , ,	2.5
(mm <sup>2</sup> ) <sup>2</sup> , ,	0.5
(mm <sup>2</sup> ) <sup>2</sup> , ,	2.5
	M4
Width)(mm) (Blade thickness x	1.0x5.5
Philips	PH2
(N.m)	1.8
	8~9



-UL

(UL/CUL Group B)(V)	600
(UL/CUL Group B)(A)	65
(UL/CUL Group C)(V)	600
(UL/CUL Group C)(A)	65
UL/CUL AWG	20
UL/CUL AWG	6
UL/CUL AWG	20
UL/CUL AWG	6

&

가 (YES or NO)	YES
	120
	-40

UL

(Group B)(AWG)	20~6
(Group B)(V)	600
(Group B)(A)	65
(Group C)(AWG)	20~6
(Group C)(V)	600
(Group C)(A)	65

CUL

(Group B)(AWG)	20~6
(Group B)(V)	600
(Group B)(A)	65
(Group C)(AWG)	20~6
(Group C)(V)	600
(Group C)(A)	65

--	--

