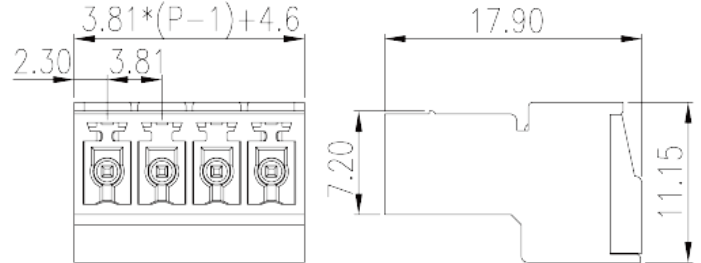
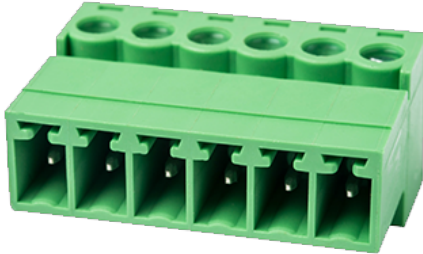


ECSH381V-XXP

PCB > PCB -

:2026-07-04 :1.1



Pitch : 3.81 mm, 300V, 8A

	PCB Connector – Socket, Screw Connection
	PCB Connector – Socket
(mm)	3.81
	Green (default)
	Screw Connection
	Without
(mm)	$3.81*(P-1)+4.60$
(mm)	17.9
(mm)	11.15
()	02P~24P
	Single level
	PA
	I
UL 94	V0
	500M at DC 500V
	COPPER ALLOY

		Tin PLATED
-IEC		
(V)		320
(A)		12
(II/2)(V)		320
(III/2)(V)		160
(III/3)(V)		160
(II/2)(KV)		2.5
(III/2)(KV)		2.5
(III/3)(KV)		2.5
(mm ²)		0.2
(mm ²)		1.5
(mm ²)		0.2
(mm ²)		1.5
(mm ²)	,	0.25
(mm ²)	,	1
(mm ²)	,	0.25
(mm ²)	,	0.5
2	(mm ²)	0.2
2	(mm ²)	0.75
2	(mm ²)	0.2
2	(mm ²)	0.75
(mm ²) ²	,	0.25
(mm ²) ²	,	0.34
(mm ²) ²	,	0.5
(mm ²) ²	,	0.5
Width)(mm)	(Blade thickness x	0.4x2.5
Philips		M2
(N.m)		0.2

6~7

-UL

(UL/CUL Group B)(V)		300
(UL/CUL Group B)(A)		8
(UL/CUL Group D)(V)		300
(UL/CUL Group D)(A)		8
UL/CUL	AWG	30
UL/CUL	AWG	14
UL/CUL	AWG	30
UL/CUL	AWG	14

&

가	(YES or NO)	YES
		120
		-40

UL

(Group B)(AWG)		30~14
(Group B)(V)		300
(Group B)(A)		8
(Group D)(AWG)		30~14
(Group D)(V)		300
(Group D)(A)		8

CUL

(Group B)(AWG)		30~14
(Group B)(V)		300
(Group B)(A)		8
(Group D)(AWG)		30~14
(Group D)(V)		300
(Group D)(A)		8

