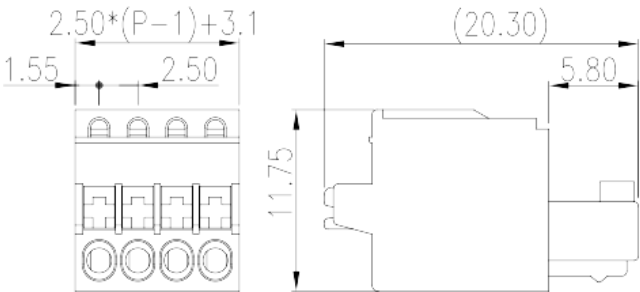
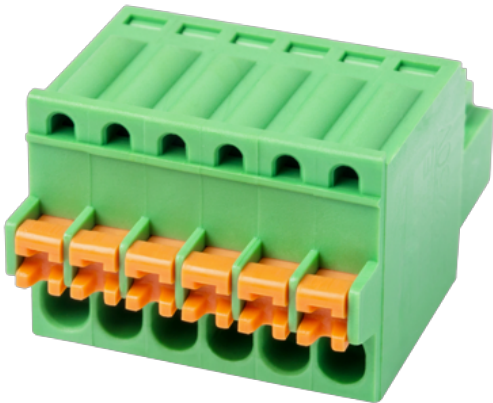


# ESC250V-XXP

PCB > PCB -

:2026-02-09 :1.1



Pitch : 2.50 mm, 150V, 4A

	PCB Connector – Plug, Push in design
	PCB Connector – Plug
(mm)	2.50
	Green (default)
	Push in Design
	Without
(mm)	2.50*P+3.1
(mm)	20.3
(mm)	11.75
( )	02P~24P
	Single level
	PA
	I
UL 94	V0
	500M at DC 500V
	COPPER ALLOY

Tin PLATED

## -IEC

(V)	320
(A)	4
(II/2)(V)	320
(III/2)(V)	160
(III/3)(V)	160
(II/2)(KV)	2.5
(III/2)(KV)	2.5
(III/3)(KV)	2.5
(mm <sup>2</sup> )	0.2
(mm <sup>2</sup> )	0.5
(mm <sup>2</sup> )	0.2
(mm <sup>2</sup> )	0.5
(mm <sup>2</sup> ) , ,	0.25
(mm <sup>2</sup> ) , ,	0.34
(mm <sup>2</sup> ) , ,	0.25
(mm <sup>2</sup> ) , ,	0.34
Philips	0.4x2.5
	8

## -UL

(UL/CUL Group B)(V)	150
(UL/CUL Group B)(A)	4
(UL/CUL Group D)(V)	150
(UL/CUL Group D)(A)	4
UL/CUL AWG	28
UL/CUL AWG	20
UL/CUL AWG	28
UL/CUL AWG	20

&amp;

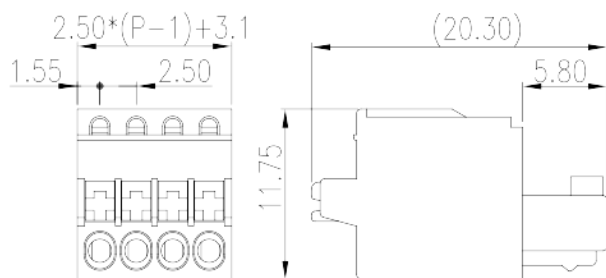
가 (YES or NO)	YES
	120
	-40

## UL

(Group B) (AWG)	28~20
(Group B) (V)	150
(Group B) (A)	4
(Group D) (AWG)	28~20
(Group D) (V)	150
(Group D) (A)	4

## CUL

(Group B) (AWG)	28~20
(Group B) (V)	150
(Group B) (A)	4
(Group D) (AWG)	28~20
(Group D) (V)	150
(Group D) (A)	4





Delight Through Connections

