

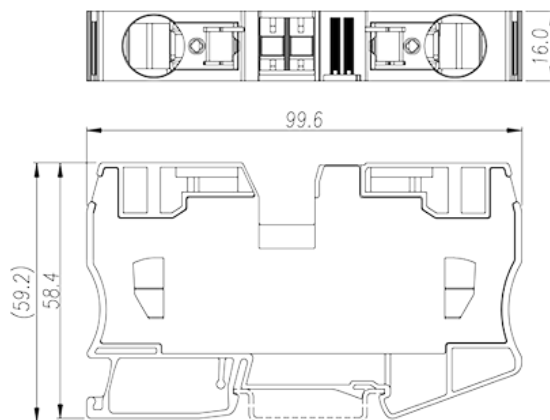
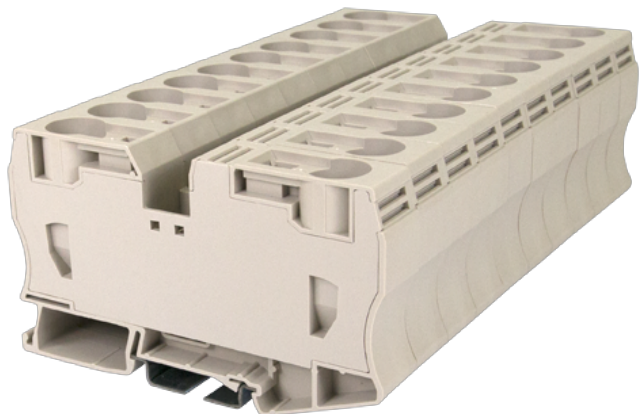
AK35

DIN

>

:2026-07-04

:1.1



600V, 105A, Beige (default)

	DIN Rail terminal blocks, Feed through terminal blocks
	Feed through terminal blocks
	Beige (default)
	Spring Clamp Connection
	Rail Mounting
(mm)	99.6
(mm)	16
(mm)	58.4
	Single level
	2
	PA
	I
UL 94	V0
	500M at DC 500V

-IEC

(V)	1000
(A)	125
(III/3)(V)	1000
(II/2)(KV)	8
(III/2)(KV)	8
(III/3)(KV)	8
(mm ²)	2.5
(mm ²)	35
(mm ²)	2.5
(mm ²)	35
(mm ²) , ,	2.5
(mm ²) , ,	35
(mm ²) , ,	2.5
(mm ²) , ,	35
2 (mm ²) , ,	2.5
2 (mm ²) , ,	10
Width)(mm) (Blade thickness x	1.0x5.5
	25
	TS-35
	YES
	NO

-UL

(UL/CUL Group B)(V)	600
(UL/CUL Group B)(A)	105
(UL/CUL Group C)(V)	600
(UL/CUL Group C)(A)	105
UL/CUL AWG	14
UL/CUL AWG	2
UL/CUL AWG	14
UL/CUL AWG	2

&

(YES or NO)	YES
가 (YES or NO)	YES
	120
	-40

VDE

(mm ²)	2.5~35
(V)	1000
(A)	125

