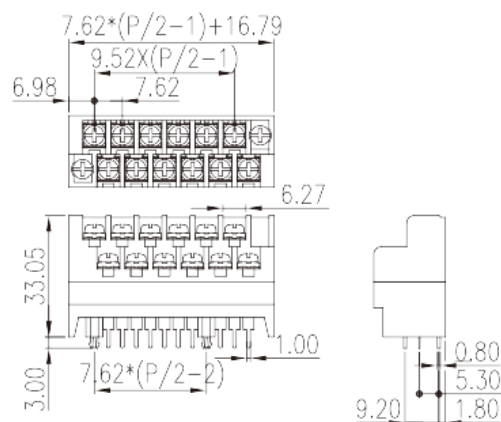
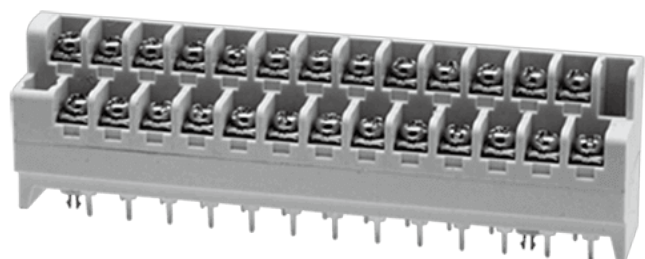


2DSDCN-01-XX

>

:2026-07-04

:1.2



Pitch : 7.62mm, M3, 300V, 14A

	Barrier Terminals, Screw Connection
	Bi-level
(mm)	7.62
	Grey (default)
	Screw Connection
	Without
(x) (mm)	0.8x1.0
PCB (mm)	1.7
	Bi-level
	PBT
	IIIa
UL 94	V0
	Copper Alloy
	Gold plated

-IEC

(A)		15
(II/2)(V)		320
(III/2)(V)		320
(III/3)(V)		250
(II/2)(KV)		4
(III/2)(KV)		4
(III/3)(KV)		4
(mm ²)		0.5
(mm ²)		1.5
(mm ²)		0.5
(mm ²)		1.5
2	(mm ²)	1
2	(mm ²)	1
		M3
Width)(mm)	(Blade thickness x	0.8x4.0
Philips		PH2
(N.m)		1
(N.m)		0.5
(N.m)		1
		6~7

-UL

(UL/CUL Group B)(V)		300
(UL/CUL Group B)(A)		12
UL/CUL	AWG	22
UL/CUL	AWG	14
UL/CUL	AWG	22
UL/CUL	AWG	14

&

(YES or NO)		YES
		130
		-40

