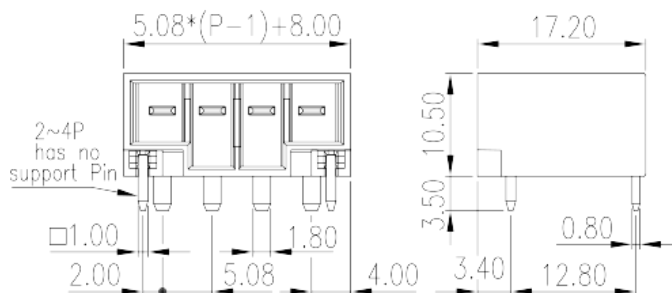
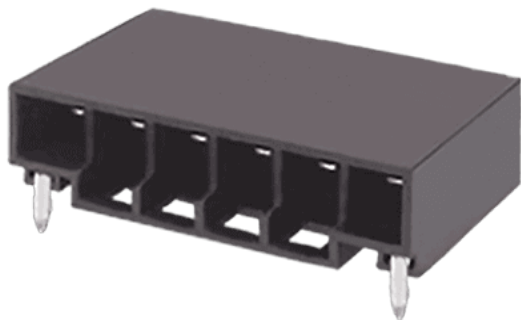


# 0150-26XX

PCB > PCB -

:2026-07-05 :V1



Pitch : 5.08 mm, 300V, 16A

	PCB Connector – Socket, Wave soldering
	PCB Connector – Socket
(mm)	5.08
	Black (default)
	With lock flange
	Wave soldering
(mm)	$5.08 * (P - 1) + 8.0$
(mm)	17.2
(mm)	10.5
(   x   ) (mm)	0.8x1.8
PCB (mm)	Front: 1.7~1.8 /Back:1*2.65
(   )	02P~24P
	Single level
	PBT
	IIIa
UL 94	V0



	1000M at DC 500V
	COPPER ALLOY
	Tin PLATED

**-IEC**

(V)	320
(A)	20
(II/2)(V)	320
(III/2)(V)	320
(III/3)(V)	200
(II/2)(KV)	4
(III/2)(KV)	4
(III/3)(KV)	4

**-UL**

(UL/CUL Group B)(V)	300
(UL/CUL Group B)(A)	16
(UL/CUL Group D)(V)	300
(UL/CUL Group D)(A)	10

**&**

가 (YES or NO)	YES
	120
	-40

**UL**

(Group B)(V)	300
(Group B)(A)	16
(Group D)(V)	300
(Group D)(A)	10

**CUL**

(Group B)(V)	300
(Group B)(A)	16
(Group D)(V)	300

(Group D)(A)

10

VDE

(V)

320

(A)

20

