

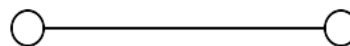
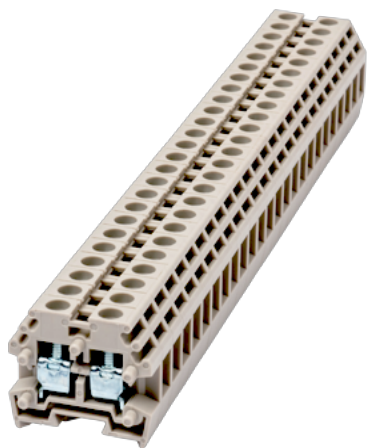
PM2.5N

DIN

>

:2026-05-14

:1.2



M2.5, 300V, 20A, Beige (default)

	DIN rail terminal blocks, Panel mounting terminal blocks
	Panel mounting terminal blocks
	Beige (default)
	Screw connection
	Panel mounting
(mm)	5.1
(mm)	22
(mm)	20
()	01P~15P
	Single level
	2
	PA
	I
UL 94	V0

-IEC



(V)		500
(A)		24
(III/3)(V)		500
(II/2)(KV)		6
(III/2)(KV)		6
(III/3)(KV)		6
(mm ²)		0.34
(mm ²)		4
(mm ²)		0.34
(mm ²)		2.5
		M2.5
Width)(mm)	(Blade thickness x	0.6x3.5
Philips		PH1
(N.m)		0.39
		6~8
		YES
		NO

-UL

(UL/CUL Group B)(V)		300
(UL/CUL Group B)(A)		20
(UL/CUL Group C)(V)		300
(UL/CUL Group C)(A)		20
(UL/CUL Group D)(V)		600
(UL/CUL Group D)(A)		5
UL/CUL	AWG	22
UL/CUL	AWG	12
UL/CUL	AWG	22
UL/CUL	AWG	12

&

(YES or NO)		YES
가 (YES or NO)		YES
		120

-40

UL

(Group B)(AWG)	22~12
(Group B)(V)	300
(Group B)(A)	20
(Group C)(AWG)	22~12
(Group C)(V)	300
(Group C)(A)	20
(Group D)(AWG)	22~12
(Group D)(V)	600
(Group D)(A)	5

CUL

(Group B)(AWG)	22~12
(Group B)(V)	300
(Group B)(A)	20
(Group C)(AWG)	22~12
(Group C)(V)	300
(Group C)(A)	20
(Group D)(AWG)	22~12
(Group D)(V)	600
(Group D)(A)	5

VDE

(mm ²)	0.34~2.5
(V)	500
(A)	24

