

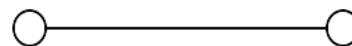
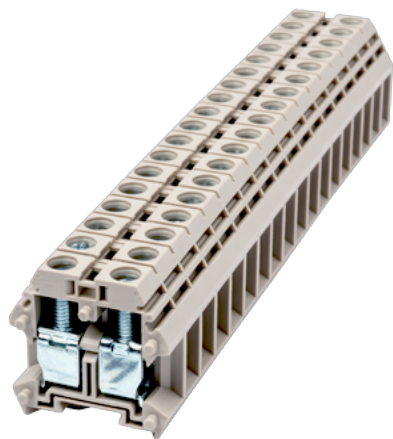
# PM6N

DIN

>

:2026-05-14

:1.2



M4, 300V, 65A, Beige (default)

	DIN rail terminal blocks, Panel mounting terminal blocks
	Panel Mounting Terminal Blocks
	Beige (default)
	Screw connection
	Panel mounting
(mm)	8
(mm)	30
(mm)	29.8
( )	01P~15P
	Single level
	2
	PA
	I
UL 94	V0

-IEC

(V)		500
(A)		41
(III/3)(V)		500
(II/2)(KV)		6
(III/2)(KV)		6
(III/3)(KV)		6
(mm <sup>2</sup> )		0.5
(mm <sup>2</sup> )		10
(mm <sup>2</sup> )		0.5
(mm <sup>2</sup> )		6
		M4
Width)(mm)	(Blade thickness x	0.8x4.0
Philips		PH2
(N.m)		1.18
		9~11
		YES
		NO

### -UL

(UL/CUL Group B)(V)		300
(UL/CUL Group B)(A)		65
(UL/CUL Group C)(V)		300
(UL/CUL Group C)(A)		65
(UL/CUL Group D)(V)		600
(UL/CUL Group D)(A)		5
UL/CUL	AWG	20
UL/CUL	AWG	6
UL/CUL	AWG	20
UL/CUL	AWG	6

### &

(YES or NO)		YES
가 (YES or NO)		YES
		120

-40

**UL**

(Group B)(AWG)	20~6
(Group B)(V)	300
(Group B)(A)	65
(Group C)(AWG)	20~6
(Group C)(V)	300
(Group C)(A)	65
(Group D)(AWG)	20~6
(Group D)(V)	600
(Group D)(A)	5

**CUL**

(Group B)(AWG)	20~6
(Group B)(V)	300
(Group B)(A)	65
(Group C)(AWG)	20~6
(Group C)(V)	300
(Group C)(A)	65
(Group D)(AWG)	20~6
(Group D)(V)	600
(Group D)(A)	5

**VDE**

(mm <sup>2</sup> )	0.5~6
(V)	500
(A)	41

