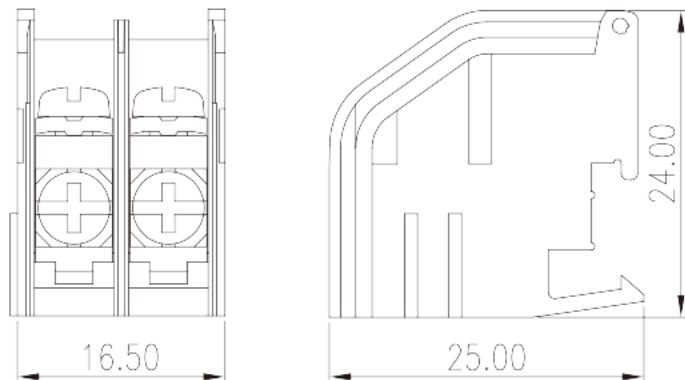
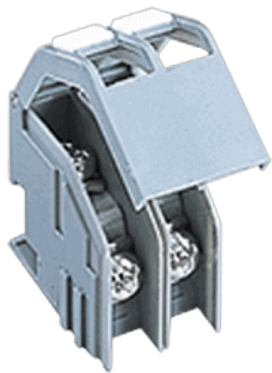


TKE02

PCB >

:2026-07-04 :1.2



M3, 600V, 15A

	Transformer terminal blocks, Screw connection
	Gray
	Screw connection
	Rail mounting
	PA
	I
UL 94	V0
	COPPER ALLOY
	Tin PLATED
-IEC	
(V)	800
(A)	17.5
(III/3)(V)	800
(II/2)(KV)	8
(III/2)(KV)	8

(III/3)(KV)	8
(mm ²)	0.5
(mm ²)	1.5
(mm ²)	0.5
(mm ²)	1.5
	M3
Width)(mm) (Blade thickness x	1x5.5
Philips	PH2
(N.m)	0.5~0.6
	9~10

-UL

(UL/CUL Group B)(V)	600
(UL/CUL Group B)(A)	15
(UL/CUL Group C)(V)	600
(UL/CUL Group C)(A)	15
(UL/CUL Group D)(V)	600
(UL/CUL Group D)(A)	5
UL/CUL AWG	20
UL/CUL AWG	16
UL/CUL AWG	20
UL/CUL AWG	16

&

(YES or NO)	YES
가 (YES or NO)	YES
	115
	-40

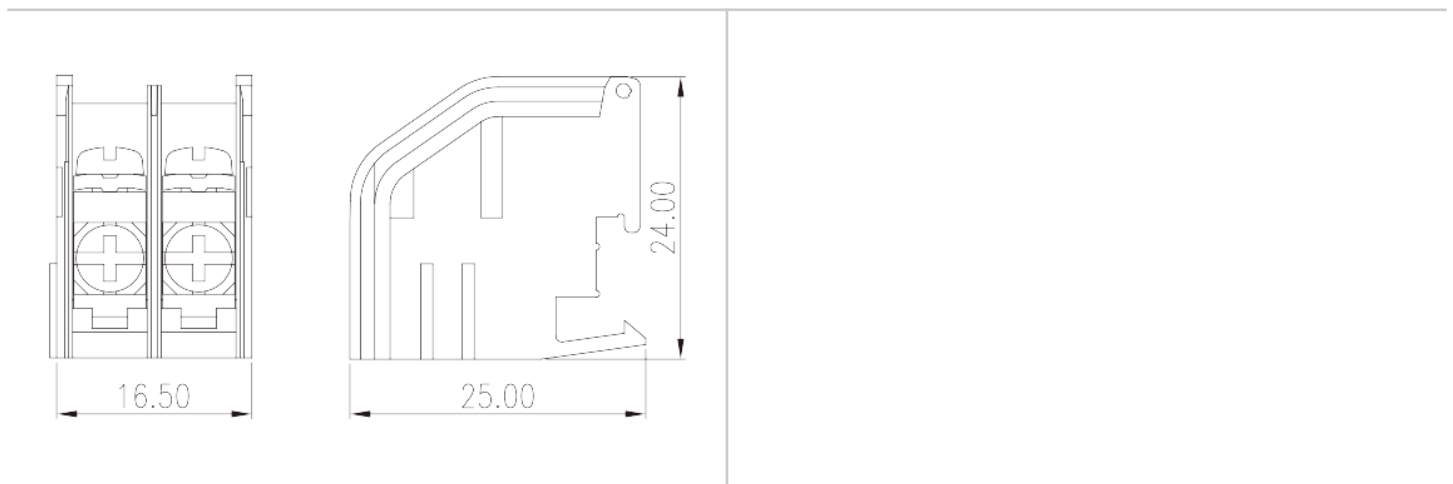
UL

(Group B)(AWG)	16~20
(Group B)(V)	600
(Group B)(A)	15
(Group C)(AWG)	16~20

(Group C)(V)	600
(Group C)(A)	15
(Group D)(AWG)	16~20
(Group D)(V)	600
(Group D)(A)	5

CUL

(Group B)(AWG)	16~20
(Group B)(V)	600
(Group B)(A)	15
(Group C)(AWG)	16~20
(Group C)(V)	600
(Group C)(A)	15
(Group D)(AWG)	16~20
(Group D)(V)	600
(Group D)(A)	5





Delight Through Connections