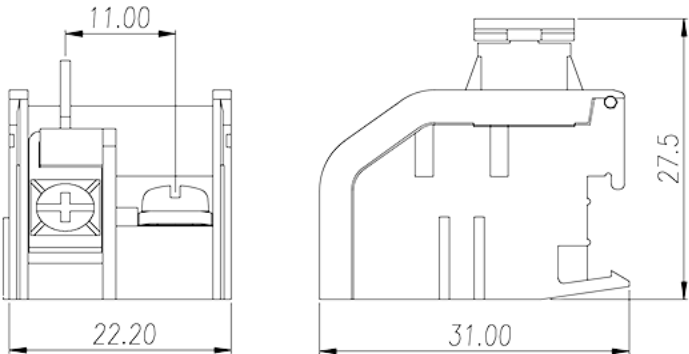
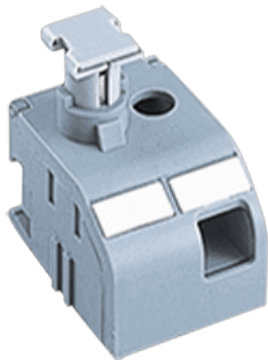


TKE03

PCB >

:2026-02-09

:1.2



M3.5, 600V, 6.3A

	Transformer terminal blocks, Screw connection
	Gray
	Screw connection
	Rail mounting

	PA
	I
UL 94	V0
	COPPER ALLOY
	Tin PLATED

-IEC

(V)	800
(A)	6.3
(III/3)(V)	800
(II/2)(KV)	8
(III/2)(KV)	8

(III/3)(KV)	8
(mm ²)	0.2
(mm ²)	4
(mm ²)	0.2
(mm ²)	4
	M3.5
Width)(mm) (Blade thickness x	0.8x4
Philips	PH2
(N.m)	1.2
	15~17

-UL

(UL/CUL Group B)(V)	600
(UL/CUL Group B)(A)	6.3
(UL/CUL Group C)(V)	600
(UL/CUL Group C)(A)	6.3
(UL/CUL Group D)(V)	600
(UL/CUL Group D)(A)	5
UL/CUL AWG	24
UL/CUL AWG	12
UL/CUL AWG	24
UL/CUL AWG	12

&

(YES or NO)	YES
가 (YES or NO)	YES
	115
	-40

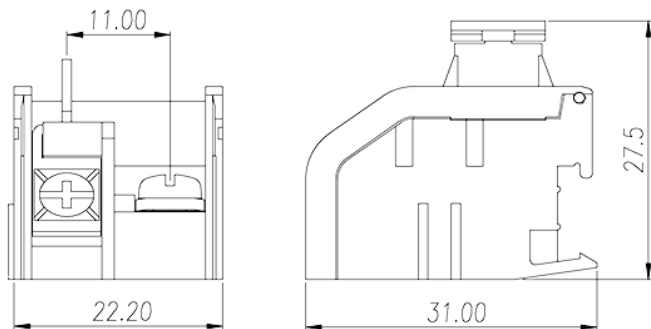
UL

(Group B)(AWG)	12~24
(Group B)(V)	600
(Group B)(A)	6.3
(Group C)(AWG)	12~24

(Group C) (V)	600
(Group C) (A)	6.3
(Group D) (AWG)	12~24
(Group D) (V)	600
(Group D) (A)	5

CUL

(Group B) (AWG)	12~24
(Group B) (V)	600
(Group B) (A)	6.3
(Group C) (AWG)	12~24
(Group C) (V)	600
(Group C) (A)	6.3
(Group D) (AWG)	12~24
(Group D) (V)	600
(Group D) (A)	5





Delight Through Connections