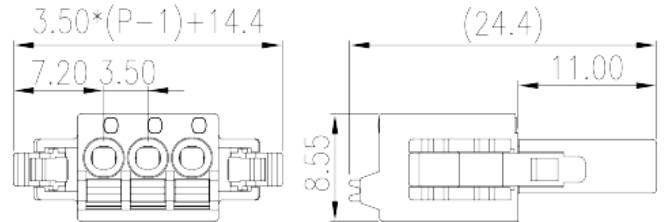
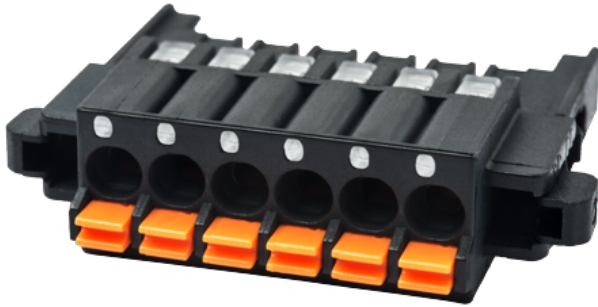


# 0225-02XX

PCB &gt; PCB -

:2026-07-05 :1.1



Pitch : 3.50 mm, 300V, 8A

	PCB Connector – Plug, Push-in Design
	PCB Connector – Plug
(mm)	3.50
	Black (default)
	Push in Design
	With lock flange
(mm)	$3.50 * (P - 1) + 14.4$
(mm)	24.4
(mm)	8.55
( )	02P~24P
	Single level
	PA
	I
UL 94	V0
	500M at DC 500V
	COPPER ALLOY

Tin PLATED

**-IEC**

(V)	630
(A)	15
(II/2)(V)	630
(III/2)(V)	320
(III/3)(V)	250
(II/2)(KV)	4
(III/2)(KV)	4
(III/3)(KV)	4
(mm <sup>2</sup> )	0.2
(mm <sup>2</sup> )	1.5
(mm <sup>2</sup> )	0.2
(mm <sup>2</sup> )	1.5
	8~9

**-UL**

(UL/CUL Group B)(V)	300
(UL/CUL Group B)(A)	8
(UL/CUL Group D)(V)	300
(UL/CUL Group D)(A)	8
UL/CUL AWG	28
UL/CUL AWG	16
UL/CUL AWG	28
UL/CUL AWG	16

**&**

가 (YES or NO)	YES
	120
	-40

**UL**

(Group B)(AWG)	28~16
(Group B)(V)	300

(Group B)(A)	8
(Group D)(AWG)	28~16
(Group D)(V)	300
(Group D)(A)	8

## CUL

(Group B)(AWG)	28~16
(Group B)(V)	300
(Group B)(A)	8
(Group D)(AWG)	28~16
(Group D)(V)	300
(Group D)(A)	8

