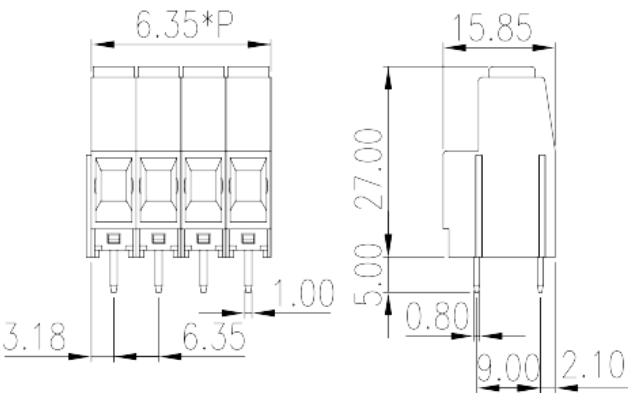
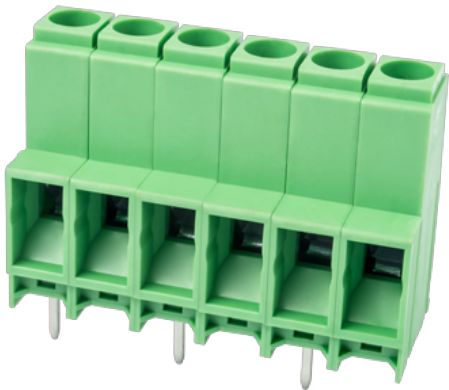


EPK635VN-XXP

PCB > PCB

:2026-02-09 :V1



Pitch : 6.35mm, 600V, 35A

	PCB Terminal Blocks, Screw Connection
	PCB Terminal Blocks
(mm)	6.35
	Green (default)
	Screw Connection
	Without
(mm)	6.35*(P-1)+6.35
(mm)	15.85
(mm)	25.5
(x) (mm)	0.8x1.0
PCB (mm)	1.5~1.6
()	02P~16P
	Single level
	PA
	I
UL 94	V0



	500M at DC 500V
	COPPER ALLOY
	Tin PLATED
-IEC	
(V)	1000
(A)	41
(II/2)(V)	1000
(III/2)(V)	1000
(III/3)(V)	630
(II/2)(KV)	8
(III/2)(KV)	8
(III/3)(KV)	8
(mm ²)	0.2
(mm ²)	6
(mm ²)	0.2
(mm ²)	6
(mm ²) , ,	0.25
(mm ²) , ,	4
(mm ²) , ,	0.25
(mm ²) , ,	4
2 (mm ²)	0.2
2 (mm ²)	2.5
2 (mm ²)	0.2
2 (mm ²)	2.5
2 (mm ²) , ,	0.25
2 (mm ²) , ,	1.5
2 (mm ²) , ,	0.5
2 (mm ²) , ,	2.5
	M3

Width) (mm)	(Blade thickness x	0.8x4.0
	(N.m)	0.5
		9~10

-UL

(UL/CUL Group B) (V)		600
(UL/CUL Group B) (A)		35
(UL/CUL Group C) (V)		600
(UL/CUL Group C) (A)		35
(UL/CUL Group D) (V)		600
(UL/CUL Group D) (A)		5
UL/CUL	AWG	18
UL/CUL	AWG	8
UL/CUL	AWG	18
UL/CUL	AWG	8

&

가	(YES or NO)	YES
		120
		-40

UL

(Group B) (AWG)		18~8
(Group B) (V)		600
(Group B) (A)		35
(Group C) (AWG)		18~8
(Group C) (V)		600
(Group C) (A)		35
(Group D) (AWG)		18~8
(Group D) (V)		600
(Group D) (A)		5

CUL

(Group B) (AWG)		18~8
-----------------	--	------

(Group B) (V)	600
(Group B) (A)	35
(Group C) (AWG)	18~8
(Group C) (V)	600
(Group C) (A)	35
(Group D) (AWG)	18~8
(Group D) (V)	600
(Group D) (A)	5

VDE

(mm ²)	0.2~6
(V)	1000
(A)	41

