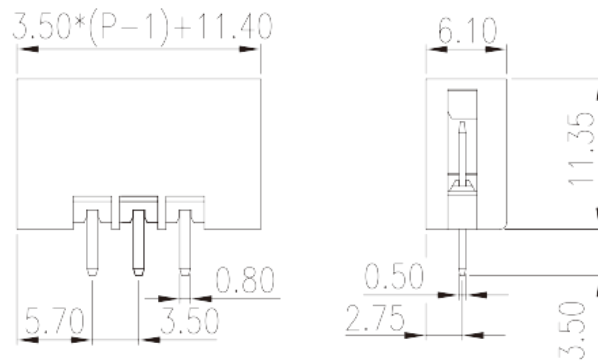
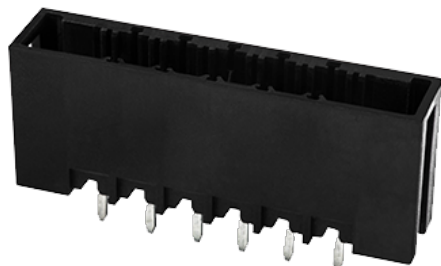


# 0225-27XX

PCB > PCB -

:2026-05-14 :1.2



Pitch : 3.50 mm, 300V, 8A

		PCB Connector – Socket, Wave soldering
		PCB Connector – Socket
(mm)		3.50
		Black (default)
		With lock flange
		Wave soldering
(mm)		$3.50 \times (P-1) + 11.4$
(mm)		6.1
(mm)		11.35
( ) x ( ) (mm)		0.5x0.8
PCB (mm)		1.2
( )		02P~24P
		Single level
		PA
		I
UL 94		V0



	500M at DC 500V
	COPPER ALLOY
	Tin PLATED

**-IEC**

(V)	630
(A)	15
(II/2)(V)	630
(III/2)(V)	320
(III/3)(V)	250
(II/2)(KV)	4
(III/2)(KV)	4
(III/3)(KV)	4

**-UL**

(UL/CUL Group B)(V)	300
(UL/CUL Group B)(A)	8
(UL/CUL Group D)(V)	300
(UL/CUL Group D)(A)	8

**&**

가 (YES or NO)	YES
	120
	-40

--	--

