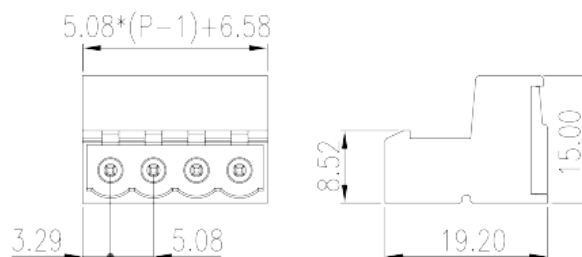
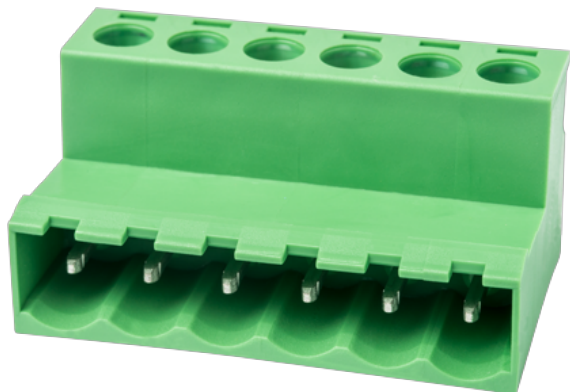


# 2ESH-XXP

PCB > PCB -

:2026-05-13 :1.1



Pitch : 5.08 mm, 300V, 12A

	PCB Connector – Socket, Screw Connection
	PCB Connector – Socket
(mm)	5.08
	Green (default)
	Screw Connection
	Without
(mm)	$5.08 \times (P-1) + 6.58$
(mm)	19.2
(mm)	15
( )	02P~12P
	Single level
	PA
	I
UL 94	V0
	500M at DC 500V
	COPPER ALLOY

Tin PLATED

**-IEC**

(V)	250
(A)	12
(II/2)(V)	600
(III/2)(V)	320
(III/3)(V)	250
(II/2)(KV)	2.5
(III/2)(KV)	2.5
(III/3)(KV)	2.5
(mm <sup>2</sup> )	0.5
(mm <sup>2</sup> )	2.5
(mm <sup>2</sup> )	0.5
(mm <sup>2</sup> )	2.5
(mm <sup>2</sup> ) , ,	0.25
(mm <sup>2</sup> ) , ,	2.5
(mm <sup>2</sup> ) , ,	0.25
(mm <sup>2</sup> ) , ,	1.5
2 (mm <sup>2</sup> )	1.5
2 (mm <sup>2</sup> ) , ,	0.5
2 (mm <sup>2</sup> ) , ,	1
	M2.5
Width)(mm) (Blade thickness x	0.6x3.5
Philips	PH1
(N.m)	0.5
	7~8

**-UL**

(UL/CUL Group B)(V)	300
(UL/CUL Group B)(A)	12



UL/CUL	AWG	24
UL/CUL	AWG	12
UL/CUL	AWG	24
UL/CUL	AWG	12

&

가	(YES or NO)	YES
		120
		-40

### UL

(Group B)(AWG)	24~12
(Group B)(V)	300
(Group B)(A)	10
(Group D)(AWG)	24~12
(Group D)(V)	300
(Group D)(A)	10

### CUL

(Group B)(AWG)	24~12
(Group B)(V)	300
(Group B)(A)	12
(Group D)(AWG)	24~12
(Group D)(V)	300
(Group D)(A)	10

--	--

