

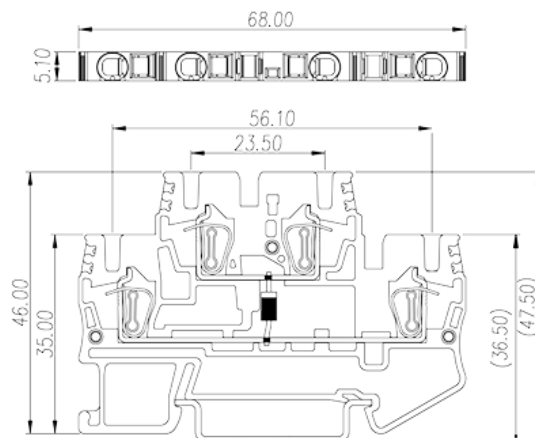
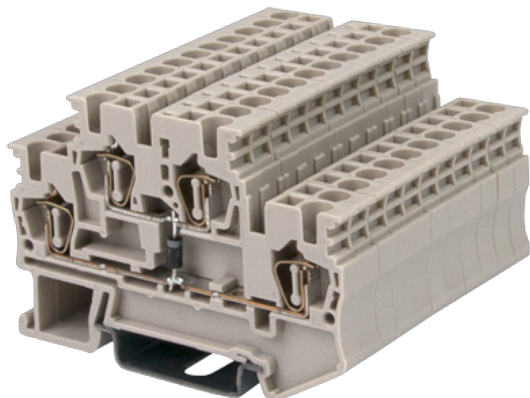
AKK2.5-D01

DIN

>

:2026-05-14

:1.1



250V, 0.5A, Beige (default)

	DIN Rail terminal blocks, Diode terminal blocks
	Diode terminal blocks
	Beige (default)
	Spring Clamp Connection
	Rail Mounting
(mm)	68
(mm)	5.1
(mm)	46
	Double level
	4
	PA
	I
UL 94	V0
	500M at DC 500V

-IEC

(V)		250
(A)		0.5
(III/3)(V)		250
(II/2)(KV)		8
(III/2)(KV)		8
(III/3)(KV)		8
(mm ²)		0.2
(mm ²)		4
(mm ²)		0.2
(mm ²)		2.5
(mm ²)	,	0.25
(mm ²)	,	2.5
(mm ²)	,	0.25
(mm ²)	,	2.5
	² (mm ²) ,	0.5
	² (mm ²) ,	0.5
Width)(mm)	(Blade thickness x	0.6x3.5
		10
		TS-35
		YES
		NO

-UL

(UL/CUL Group B)(V)		250
(UL/CUL Group B)(A)		0.5
(UL/CUL Group C)(V)		250
(UL/CUL Group C)(A)		0.5
UL/CUL	AWG	30
UL/CUL	AWG	12
UL/CUL	AWG	30
UL/CUL	AWG	12

&

(YES or NO)	YES
가 (YES or NO)	YES
	120
	-40

