

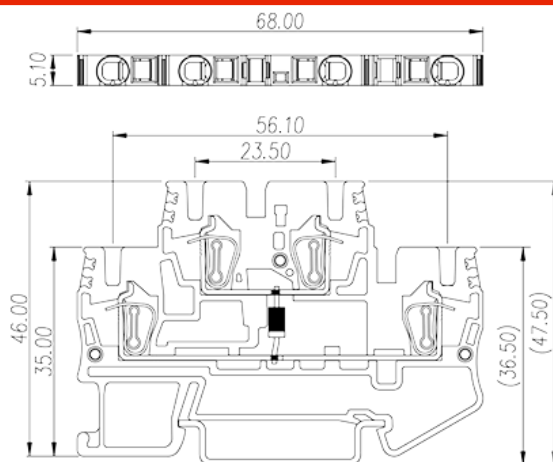
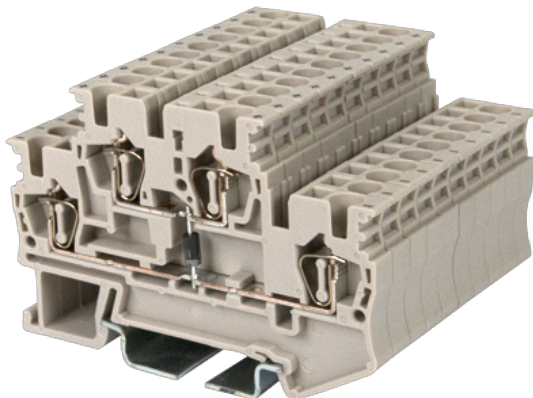
# AKK2.5-D02

DIN

>

:2026-07-04

:1.1



250V, 0.5A, Beige (default)

	DIN Rail terminal blocks, Diode terminal blocks
	Diode terminal blocks
	Beige (default)
	Spring Clamp Connection
	Rail Mounting
(mm)	68
(mm)	5.1
(mm)	46
	Double level
	4
	PA
	I
UL 94	V0
	500M at DC 500V

-IEC

(V)		250
(A)		0.5
(III/3)(V)		250
(II/2)(KV)		8
(III/2)(KV)		8
(III/3)(KV)		8
(mm <sup>2</sup> )		0.2
(mm <sup>2</sup> )		4
(mm <sup>2</sup> )		0.2
(mm <sup>2</sup> )		2.5
(mm <sup>2</sup> )	,	0.25
(mm <sup>2</sup> )	,	2.5
(mm <sup>2</sup> )	,	0.25
(mm <sup>2</sup> )	,	2.5
	<sup>2</sup> (mm <sup>2</sup> ) ,	0.5
	<sup>2</sup> (mm <sup>2</sup> ) ,	0.5
Width)(mm)	(Blade thickness x	0.6x3.5
		10
		TS-35
		YES
		NO

### -UL

(UL/CUL Group B)(V)		250
(UL/CUL Group B)(A)		0.5
(UL/CUL Group C)(V)		250
(UL/CUL Group C)(A)		0.5
UL/CUL	AWG	30
UL/CUL	AWG	12
UL/CUL	AWG	30
UL/CUL	AWG	12

&

(YES or NO)	YES
가 (YES or NO)	YES
	120
	-40

