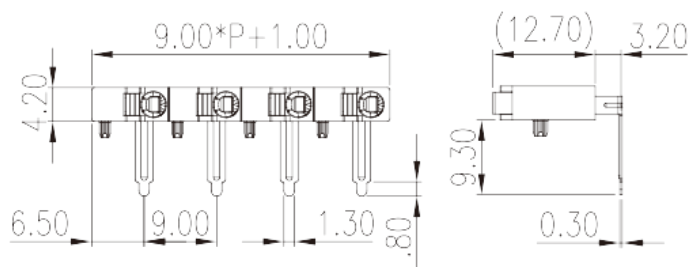
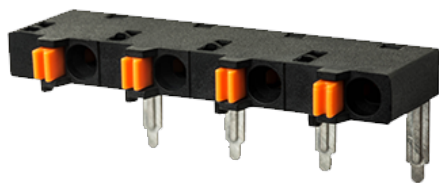


# 0171-60XX

PCB &gt; PCB

:2026-07-05 :V1



Pitch : 9.00mm, 300V, 8A

PCB Terminal Blocks, Push-in Design	
PCB Terminal Blocks	
(mm)	9.00
	Black (default)
	Push in design
	Without
	Wave soldering
(mm)	$9.50*(P-1) + 10.0$
(mm)	16.05
(mm)	11.7
( ) x ( ) (mm)	0.3x1.3
PCB (mm)	0.5x1.8
( )	01P~04P
	Single level
	PA
	I



UL 94	V0
	500M at DC 500V
	COPPER ALLOY
	Tin PLATED

**-IEC**

(V)	630
(A)	15
(II/2)(V)	1000
(III/2)(V)	630
(III/3)(V)	500
(II/2)(KV)	6
(III/2)(KV)	6
(III/3)(KV)	6
(mm <sup>2</sup> )	0.2
(mm <sup>2</sup> )	1.5
(mm <sup>2</sup> )	0.2
(mm <sup>2</sup> )	1.5
(mm <sup>2</sup> ) , ,	0.25
(mm <sup>2</sup> ) , ,	1
(mm <sup>2</sup> ) , ,	0.25
(mm <sup>2</sup> ) , ,	1
	7~8

**-UL**

(UL/CUL Group B)(V)	300
(UL/CUL Group B)(A)	8
(UL/CUL Group D)(V)	300
(UL/CUL Group D)(A)	8
UL/CUL AWG	28
UL/CUL AWG	16
UL/CUL AWG	28
UL/CUL AWG	16

&

가 (YES or NO)	YES
	120
	-40

