

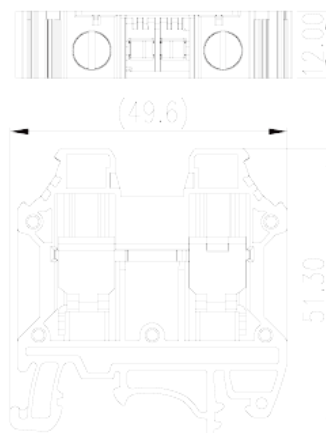
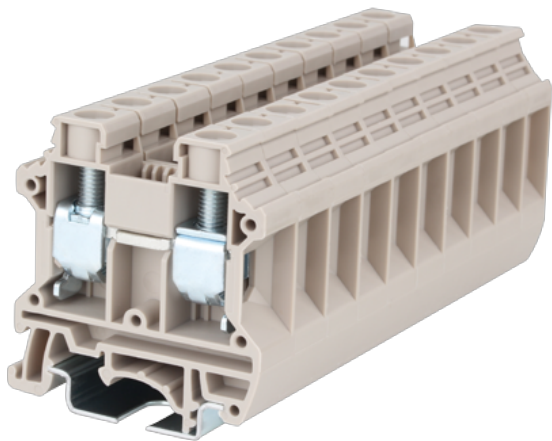
DK16N

DIN

>

:2026-07-04

:1.2



M5, 600V, 100A, Beige (default)

	Single Level Feed-through Terminal Block, Screw Connection
	Single Level Feed-through Terminal Block,
	Beige (default)
	Screw connection
	Rail mounting
(mm)	49.6
(mm)	12
(mm)	51.3
()	1P
	Single level
	2
	PA
	I
UL 94	V0
	500M at DC 500V

-IEC

(V)		1000
(A)		76
(III/3)(V)		1000
(III/3)(KV)		8
(mm ²)		1.5
(mm ²)		25
(mm ²)		1.5
(mm ²)		16
(mm ²)	,	1.5
(mm ²)	,	16
(mm ²)	,	1.5
(mm ²)	,	16
2	(mm ²)	1.5
2	(mm ²)	6
2	(mm ²)	1.5
2	(mm ²)	6
(mm ²) 2	,	1.5
(mm ²) 2	,	6
2	(mm ²)	1.5
2	(mm ²)	10
		M5
Width)(mm)	(Blade thickness x	1.0x5.5
Philips		PH2
(N.m)		2.0
(N.m)		3.4
		14~16
		TS-35、TS-35/15
		YES
		NO

-UL

(UL/CUL Group B)(V)		600
(UL/CUL Group B)(A)		100
(UL/CUL Group C)(V)		600
(UL/CUL Group C)(A)		100
UL/CUL	AWG	14
UL/CUL	AWG	3
UL/CUL	AWG	14
UL/CUL	AWG	3

&

(YES or NO)		YES
가 (YES or NO)		YES
		120
		-40

UL

(Group B)(AWG)		14~3
(Group B)(V)		600
(Group B)(A)		100
(Group C)(AWG)		14~3
(Group C)(V)		600
(Group C)(A)		100

CUL

(Group B)(AWG)		14~3
(Group B)(V)		600
(Group B)(A)		100
(Group C)(AWG)		14~3
(Group C)(V)		600
(Group C)(A)		100

VDE

(mm ²)		1.5~16
--------------------	--	--------

(V)	1000
(A)	76

