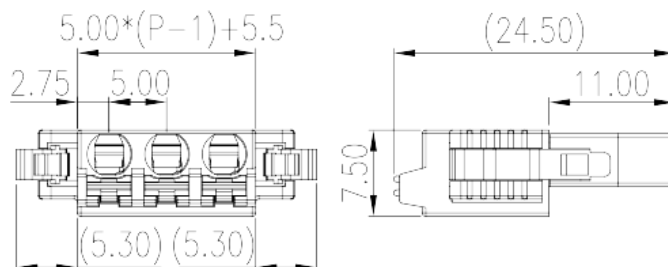
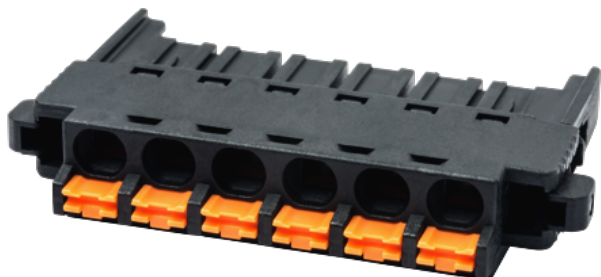


0226-07XX

PCB > PCB -

:2026-05-14 :1.1



Pitch : 5.00 mm, 300V, 10A

	PCB Connector – Plug, Push-in Design
	PCB Connector – Plug
(mm)	5.00
	Black (default)
	Push in Design
	With lock flange
(mm)	$5.00 * (P-1) + 5.5$
(mm)	24.5
(mm)	7.5
()	02P~16P
	Single level
	PA
	I
UL 94	V0
	500M at DC 500V
	COPPER ALLOY

Tin PLATED

-IEC

(V)	630
(A)	17.5
(II/2)(V)	630
(III/2)(V)	320
(III/3)(V)	320
(II/2)(KV)	4
(III/2)(KV)	4
(III/3)(KV)	4
(mm ²)	0.2
(mm ²)	1.5
(mm ²)	0.2
(mm ²)	1.5
	8~9

-UL

(UL/CUL Group B)(V)	300
(UL/CUL Group B)(A)	10
(UL/CUL Group D)(V)	300
(UL/CUL Group D)(A)	10
UL/CUL AWG	24
UL/CUL AWG	16
UL/CUL AWG	24
UL/CUL AWG	16

&

가 (YES or NO)	YES
	120
	-40

UL

(Group B)(AWG)	24~16
(Group B)(V)	300

(Group B)(A)	10
(Group D)(AWG)	24~16
(Group D)(V)	300
(Group D)(A)	10

CUL

(Group B)(AWG)	24~16
(Group B)(V)	300
(Group B)(A)	10
(Group D)(AWG)	24~16
(Group D)(V)	300
(Group D)(A)	10

