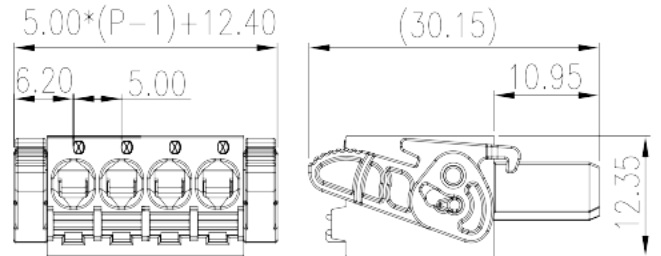
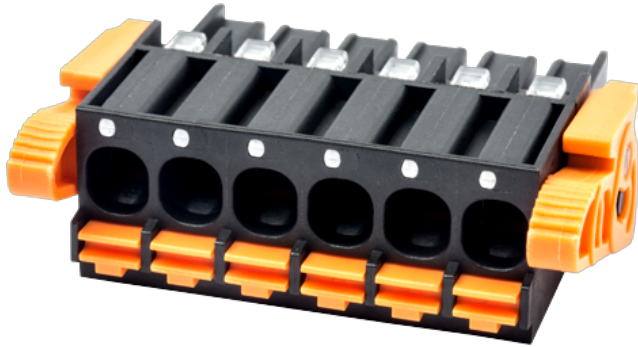


# 0227-04XX

PCB &gt; PCB -

:2026-07-05 :1.1



Pitch : 5.00 mm, 300V, 15A

	PCB Connector – Plug, Push-in Design
	PCB Connector – Plug
(mm)	5.00
	Black (default)
	Push in Design
	With release tool
(mm)	$5.00 * (P - 1) + 12.4$
(mm)	30.15
(mm)	12.35
( )	02P~24P
	Single level
	PA
	I
UL 94	V0
	500M at DC 500V
	COPPER ALLOY

Tin PLATED

**-IEC**

(V)	630
(A)	18
(II/2)(V)	630
(III/2)(V)	320
(III/3)(V)	320
(II/2)(KV)	4
(III/2)(KV)	4
(III/3)(KV)	4
(mm <sup>2</sup> )	0.2
(mm <sup>2</sup> )	2.5
(mm <sup>2</sup> )	0.2
(mm <sup>2</sup> )	2.5
(mm <sup>2</sup> ) , ,	0.25
(mm <sup>2</sup> ) , ,	2.5
(mm <sup>2</sup> ) , ,	0.25
(mm <sup>2</sup> ) , ,	2.5
(mm <sup>2</sup> ) <sup>2</sup> , ,	0.5
(mm <sup>2</sup> ) <sup>2</sup> , ,	0.5
	12~13

**-UL**

(UL/CUL Group B)(V)	300
(UL/CUL Group B)(A)	15
(UL/CUL Group D)(V)	300
(UL/CUL Group D)(A)	10
UL/CUL AWG	24
UL/CUL AWG	12
UL/CUL AWG	24
UL/CUL AWG	12

&amp;

가 (YES or NO)	YES
	120
	-40

UL

(Group B) (AWG)	26~12
(Group B) (V)	300
(Group B) (A)	15
(Group D) (AWG)	26~12
(Group D) (V)	300
(Group D) (A)	10

CUL

(Group B) (AWG)	26~12
(Group B) (V)	300
(Group B) (A)	15
(Group D) (AWG)	26~12
(Group D) (V)	300
(Group D) (A)	10

