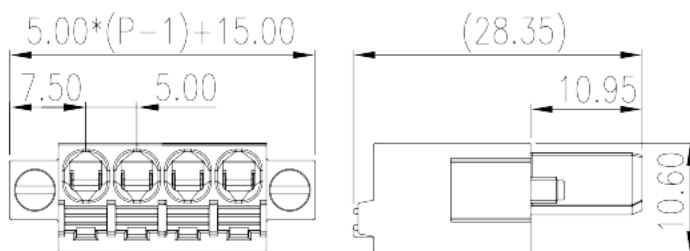
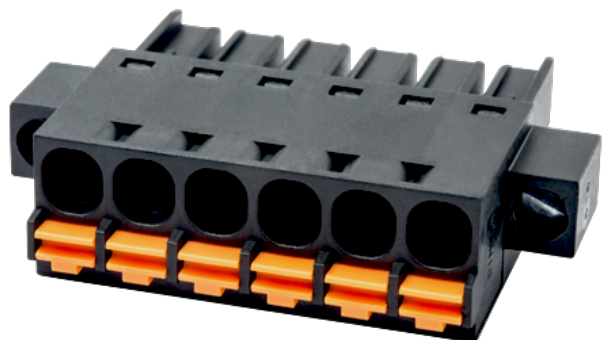


# 0227-06XX

PCB > PCB -

:2026-07-04 :1.1



Pitch : 5.00 mm, 300V, 15A

	PCB Connector – Plug, Push-in Design
	PCB Connector – Plug
(mm)	5.00
	Black (default)
	Push in Design
	With screw flange
(mm)	$5.00 * (P - 1) + 15.0$
(mm)	28.35
(mm)	10.6
( )	02P~24P
	Single level
	PA
	I
UL 94	V0
	500M at DC 500V
	COPPER ALLOY

: +886-2-8069-9000 / : service@dinkle.com

Tin PLATED

**-IEC**

(V)	630
(A)	18
(II/2)(V)	630
(III/2)(V)	320
(III/3)(V)	320
(II/2)(KV)	4
(III/2)(KV)	4
(III/3)(KV)	4
(mm <sup>2</sup> )	0.2
(mm <sup>2</sup> )	2.5
(mm <sup>2</sup> )	0.2
(mm <sup>2</sup> )	2.5
(mm <sup>2</sup> ) , ,	0.25
(mm <sup>2</sup> ) , ,	2.5
(mm <sup>2</sup> ) , ,	0.25
(mm <sup>2</sup> ) , ,	2.5
(mm <sup>2</sup> ) <sup>2</sup> , ,	0.5
(mm <sup>2</sup> ) <sup>2</sup> , ,	0.5
Width)(mm) (Blade thickness x	0.6x3.5
(N.m)	0.3
	12~13

**-UL**

(UL/CUL Group B)(V)	300
(UL/CUL Group B)(A)	15
(UL/CUL Group D)(V)	300
(UL/CUL Group D)(A)	10
UL/CUL AWG	24



UL/CUL	AWG	12
UL/CUL	AWG	24
UL/CUL	AWG	12

&

가	(YES or NO)	YES
		120
		-40

### UL

(Group B)(AWG)	26~12
(Group B)(V)	300
(Group B)(A)	15
(Group D)(AWG)	26~12
(Group D)(V)	300
(Group D)(A)	10

### CUL

(Group B)(AWG)	26~12
(Group B)(V)	300
(Group B)(A)	15
(Group D)(AWG)	26~12
(Group D)(V)	300
(Group D)(A)	10

--	--

