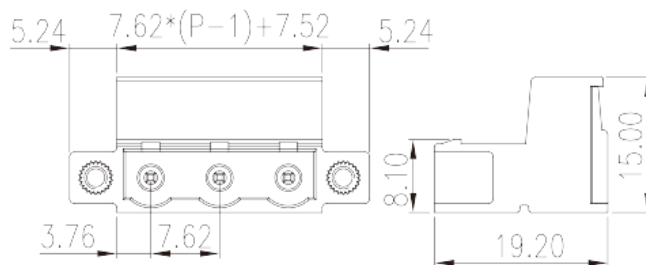
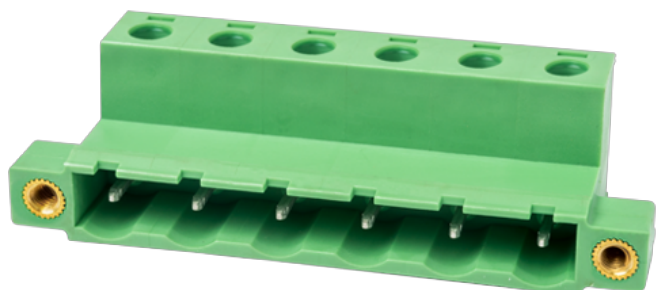


3ESDHM-XXP

PCB > PCB -

:2026-07-04 :1.1



Pitch : 7.62 mm, 300V, 15A

	PCB Connector – Plug, Screw Connection
	PCB Connector – Plug
(mm)	7.62
	Green (default)
	Screw Connection
	With threaded flange
(mm)	$7.62 * (P-1) + 18$
(mm)	19.2
(mm)	15
()	02P~12P
	Single level
	PA
	I
UL 94	V0
	500M at DC 500V
	COPPER ALLOY

		Tin PLATED
-IEC		
(V)		1000
(A)		18
(II/2)(V)		1000
(III/2)(V)		630
(III/3)(V)		400
(II/2)(KV)		6
(III/2)(KV)		6
(III/3)(KV)		6
(mm ²)		0.2
(mm ²)		4
(mm ²)		0.2
(mm ²)		2.5
(mm ²)	,	0.25
(mm ²)	,	2.5
(mm ²)	,	0.25
(mm ²)	,	2.5
2	(mm ²)	0.2
2	(mm ²)	1
2	(mm ²)	0.2
2	(mm ²)	1.5
(mm ²) ²	,	0.25
(mm ²) ²	,	0.75
(mm ²) ²	,	0.5
(mm ²) ²	,	1.5
		M2.5
Width)(mm)	(Blade thickness x	0.6x3.5
(N.m)		0.4~0.5

7~8

-UL

(UL/CUL Group B)(V)		300
(UL/CUL Group B)(A)		15
(UL/CUL Group D)(V)		300
(UL/CUL Group D)(A)		15
UL/CUL	AWG	24
UL/CUL	AWG	12
UL/CUL	AWG	24
UL/CUL	AWG	12

&

가	(YES or NO)	YES
		120
		-40

UL

(Group B)(AWG)		24~12
(Group B)(V)		300
(Group B)(A)		15
(Group D)(AWG)		24~12
(Group D)(V)		300
(Group D)(A)		15

CUL

(Group B)(AWG)		24~12
(Group B)(V)		300
(Group B)(A)		15
(Group D)(AWG)		24~12
(Group D)(V)		300
(Group D)(A)		15

