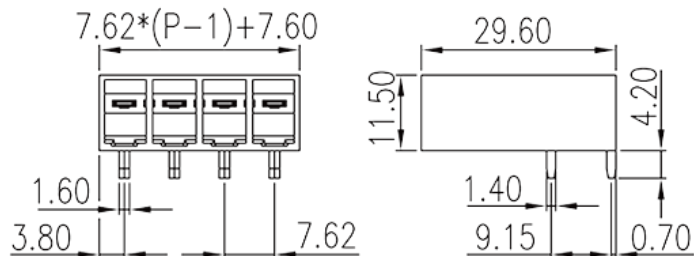
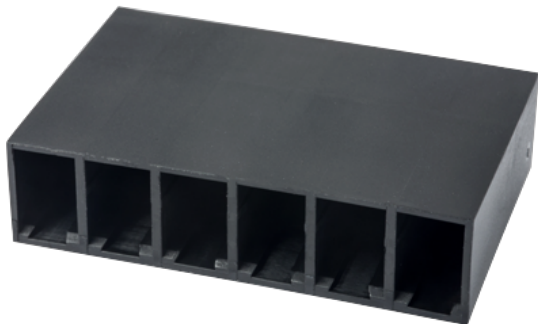


# ECH762HRR-XXP

PCB > PCB -

:2026-07-04 :V1



Pitch : 7.62 mm, 600V, 41A

	PCB Connector – Socket, Wave soldering
	PCB Connector – Socket
(mm)	7.62
	Black (default)
	Without
	Wave soldering
(mm)	$7.62 * (P-1) + 7.6$
(mm)	29.6
(mm)	11.5
(   x   ) (mm)	1.4x1.6
PCB (mm)	2.7
(   )	02P~12P
	Single level
	PA
	I
UL 94	V0



	500M at DC 500V
	COPPER ALLOY
	Tin PLATED

**-IEC**

(V)	1000
(A)	41
(II/2)(V)	1000
(III/2)(V)	1000
(III/3)(V)	630
(II/2)(KV)	8
(III/2)(KV)	8
(III/3)(KV)	8

**-UL**

(UL/CUL Group B)(V)	600
(UL/CUL Group B)(A)	41
(UL/CUL Group C)(V)	600
(UL/CUL Group C)(A)	41

**&**

가 (YES or NO)	YES
	120
	-40

**UL**

(Group B)(V)	600
(Group B)(A)	41
(Group C)(V)	600
(Group C)(A)	41

**CUL**

(Group B)(V)	600
(Group B)(A)	41
(Group D)(V)	600

(Group D)(A)

41

